

Waimakariri District Residential Red Zone Data Sets

FURZ Remediation Area Boundaries - Map 1 of 2

Red Zone Future Use - Technical Themes



IN CONFIDENCE
Restricted to Technical Panel Members Only



Legend

Land Check Colour Zones - December 2013

Red Zone Boundary

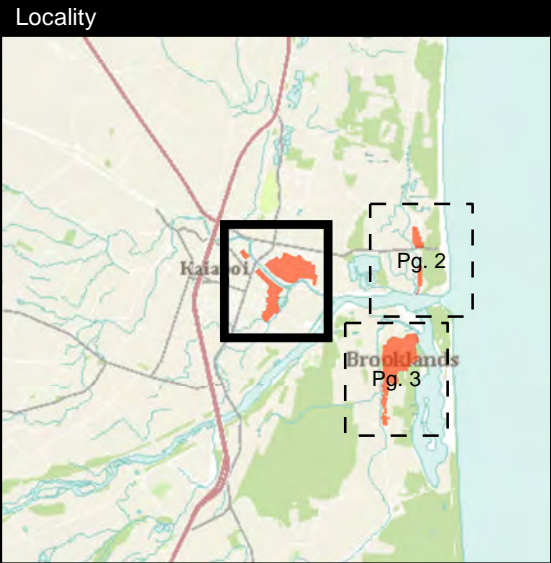
Residential Red Zone - Remediation Zones

Furz Remediation Zone Boundary

Map Purpose:

Map is a component of the Technical Theme map series produced to support the planning framework for the future use of the Residential Red Zone (FURZ).

Please note - Map supplied 'In Confidence' according to State Services Commission guidelines for more information see: <http://www.gcsb.govt.nz/newsroom/reports-publications.html>



Publication Date:
9/02/2015

Scale:
1:8,000
(Original sheet size A3)

Disclaimer
This map is a static output of depicted layers and is for reference only. Data layers that appear on this map may or may not be accurate, current, or otherwise reliable.

Coordinate System:
NZGD 2000 New Zealand Transverse Mercator

Map Document:
6771 - Furz Areas.mxd

For re-prints and map production contact NorthSouth GIS:
Servicedesk@nsgnz.co.nz

FURZ Remediation Area Boundaries - Map 2 of 2

Red Zone Future Use - Technical Themes



IN CONFIDENCE
Restricted to Technical Panel Members Only



Zone: 30.1
(9ha.)



Zone: 31.1
(5.8ha.)

0 50 100 200 300
Metres

Legend

Land Check Colour Zones - December 2013

Red Zone Boundary

Residential Red Zone - Remediation Zones

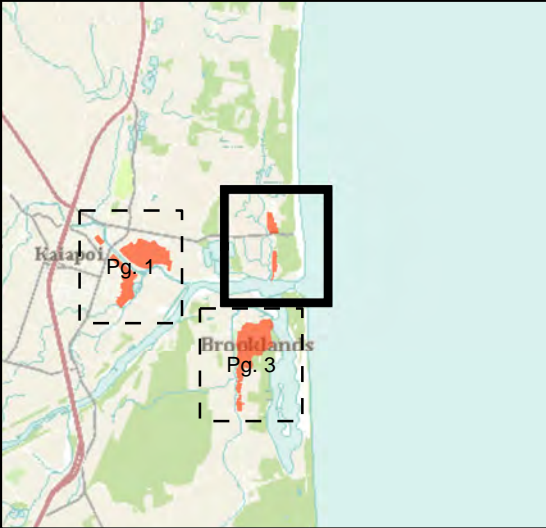
FURZ Remediation Zone Boundary

Map Purpose:

Map is a component of the Technical Theme map series produced to support the planning framework for the future use of the Residential Red Zone (FURZ).

Please note - Map supplied 'In Confidence' according to State Services Commission guidelines for more information see: <http://www.gcsb.govt.nz/newsroom/reports-publications.html>

Locality



Publication Date:
9/02/2015

Scale:
1:8,000
(Original sheet size A3)

Disclaimer
This map is a static output of depicted layers and is for reference only. Data layers that appear on this map may or may not be accurate, current, or otherwise reliable.

Coordinate System:
NZGD 2000 New Zealand Transverse Mercator

Map Document:
6771 - FURZ Areas.mxd

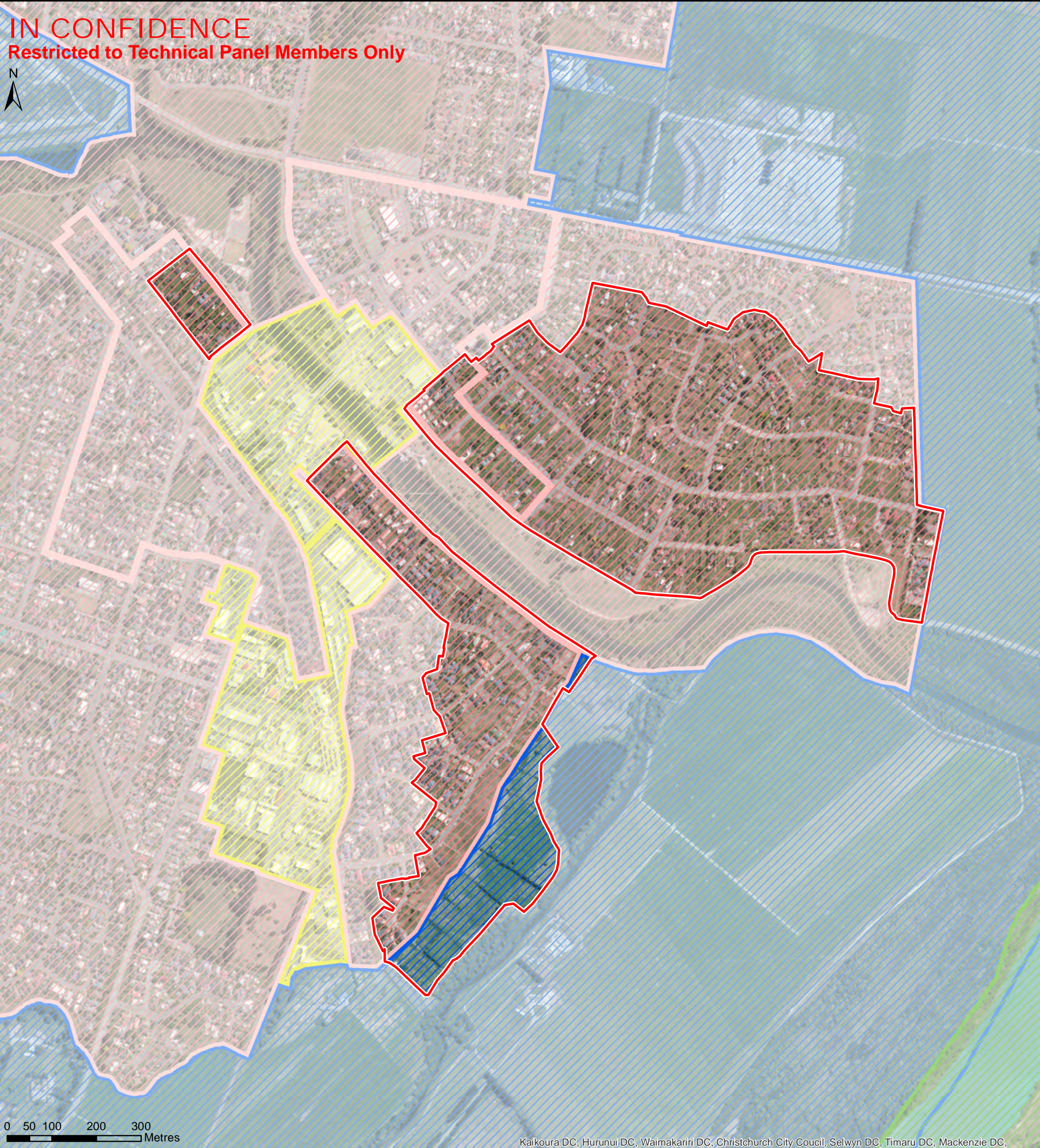
For re-prints and map production contact NorthSouth GIS:
Servicedesk@nsgnz.co.nz

District Planning Zones - Map 1 of 2

Red Zone Future Use - Technical Themes



IN CONFIDENCE
Restricted to Technical Panel Members Only



0 50 100 200 300 Metres

Kaikoura DC, Hurunui DC, Waimakariri DC, Christchurch City Council, Selwyn DC, Timaru DC, Mackenzie DC,

Legend

District Planning Zones

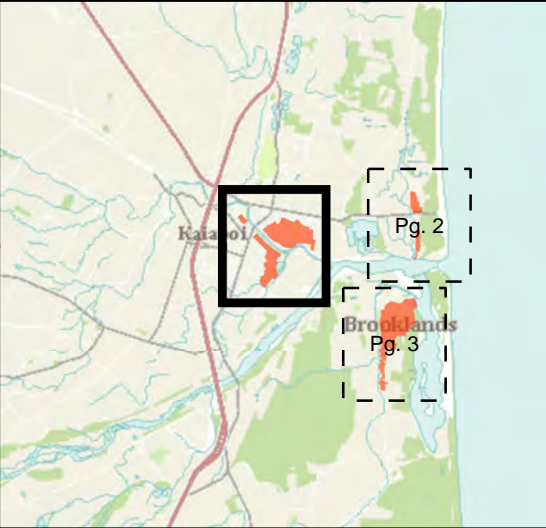
- Business Zone
- Conservation Zone
- Open Space Zone
- Residential Zone
- Rural Residential Zone
- Rural Zone

Map Purpose:

Map is a component of the technical theme map series produced to support the planning framework for the future use of the Residential Red Zone (FURZ).

Please note - Map supplied 'In Confidence' according to State Services Commission guidelines for more information see: <http://www.gcsb.govt.nz/newsroom/reports-publications.html>

Locality



Publication Date:
9/02/2015

Scale:
1:8,000
(Original sheet size A3)

Disclaimer

This map is a static output of depicted layers and is for reference only. Data layers that appear on this map may or may not be accurate, current, or otherwise reliable.

Coordinate System:
NZGD 2000 New Zealand Transverse Mercator

Map Document:
6771 - FURZ District Planning.mxd

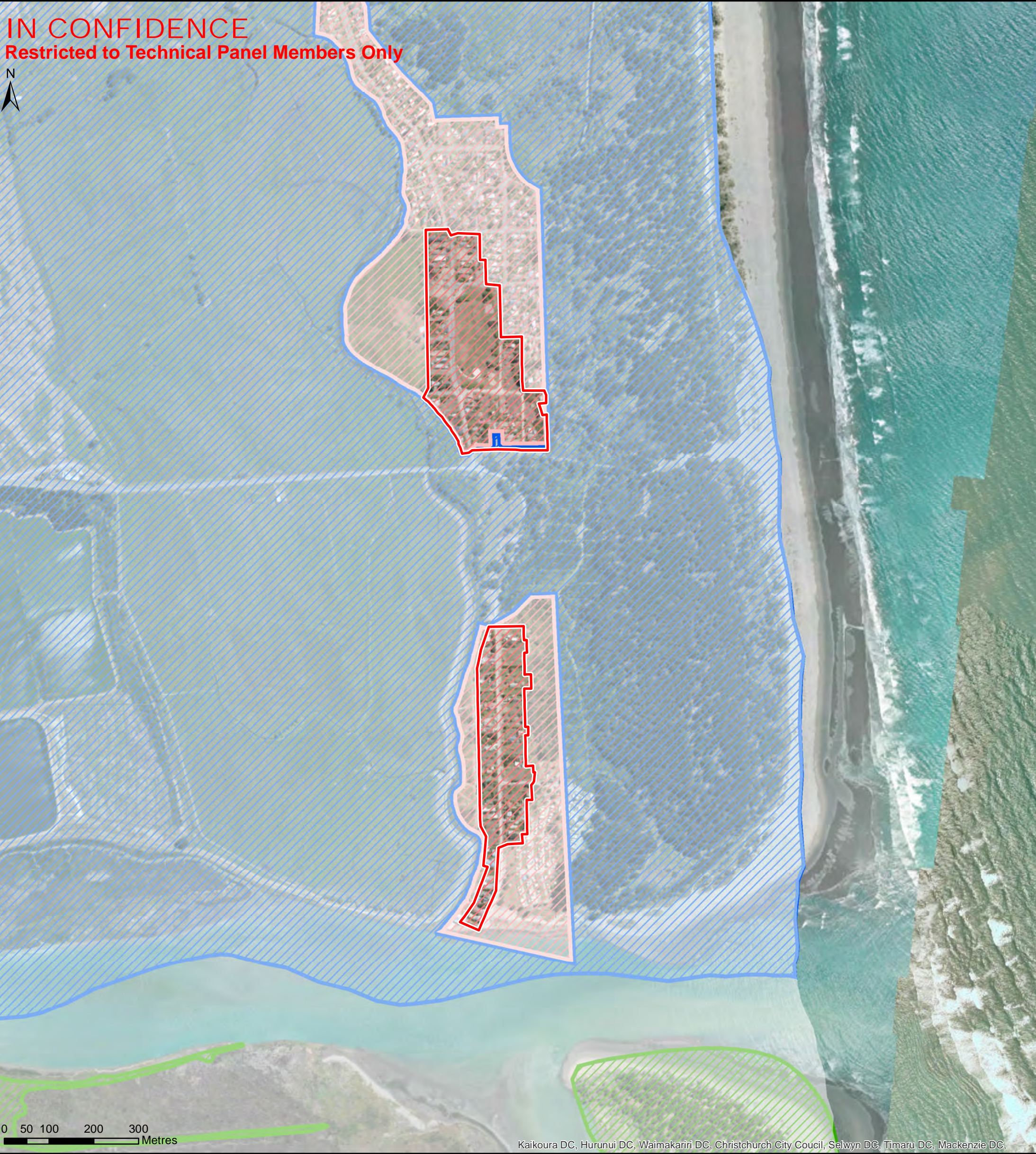
For re-prints and map production contact NorthSouth GIS:
Servicedesk@nsgnz.co.nz

District Planning Zones - Map 2 of 2

Red Zone Future Use - Technical Themes



IN CONFIDENCE
Restricted to Technical Panel Members Only

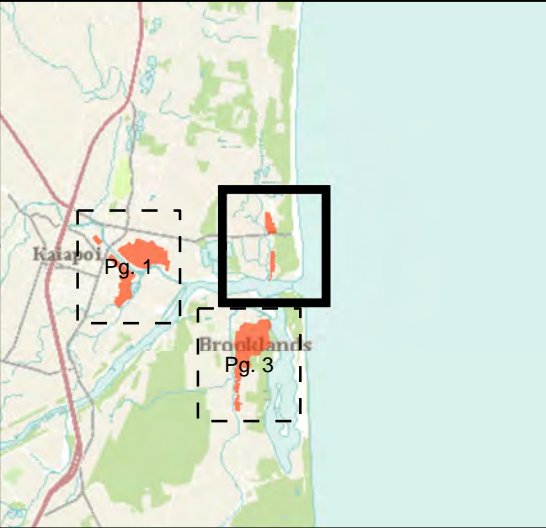


- Legend**
- District Planning Zones**
- Business Zone
 - Conservation Zone
 - Open Space Zone
 - Residential Zone
 - Rural Residential Zone
 - Rural Zone

Map Purpose:
Map is a component of the technical theme map series produced to support the planning framework for the future use of the Residential Red Zone (FURZ).

Please note - Map supplied 'In Confidence' according to State Services Commission guidelines for more information see: <http://www.gcsb.govt.nz/newsroom/reports-publications.html>

Locality



Publication Date:
9/02/2015

Scale:
1:8,000
(Original sheet size A3)

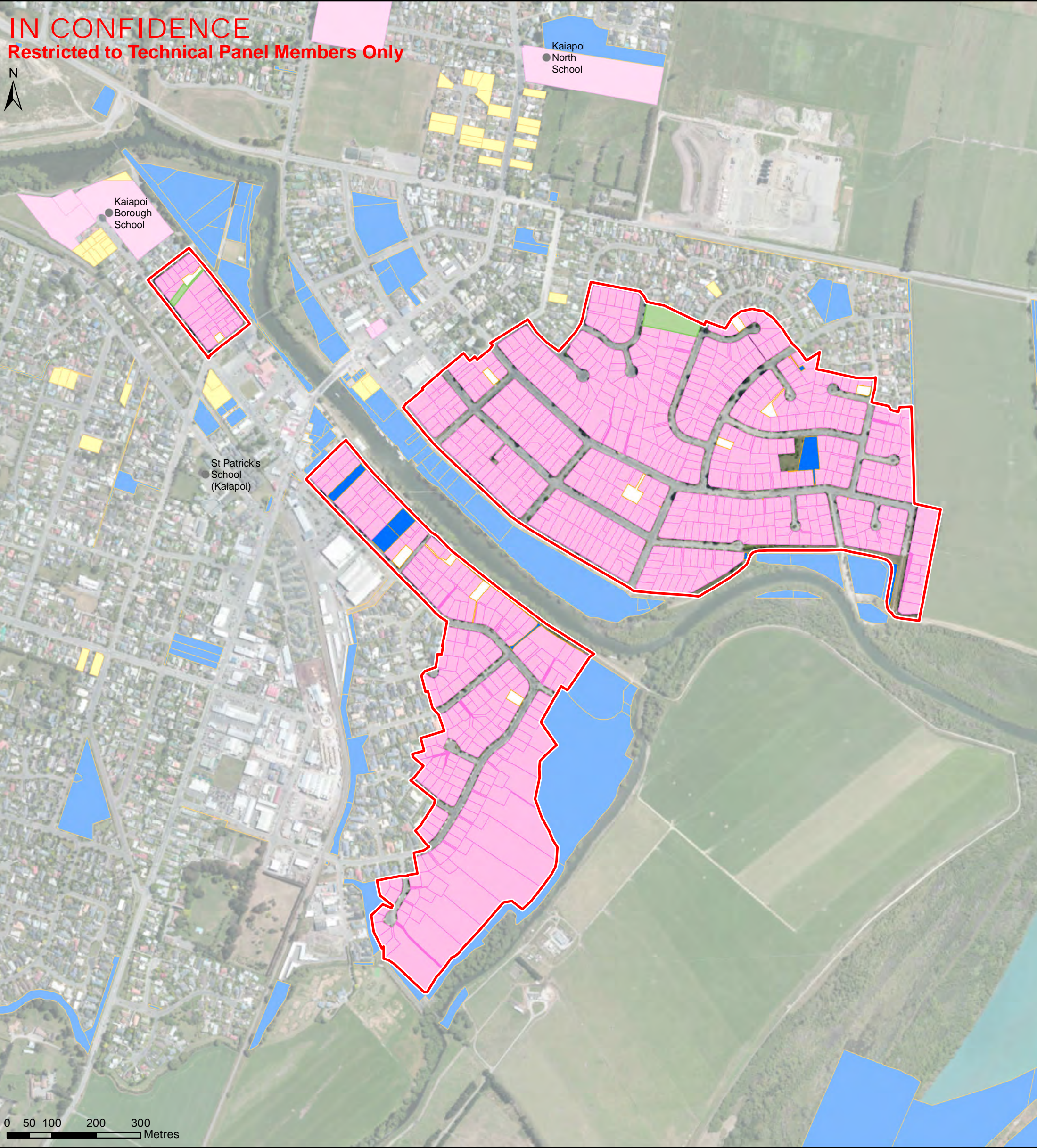
Disclaimer
This map is a static output of depicted layers and is for reference only. Data layers that appear on this map may or may not be accurate, current, or otherwise reliable.

Coordinate System:
NZGD 2000 New Zealand Transverse Mercator

Map Document:
6771 - FURZ District Planning.mxd

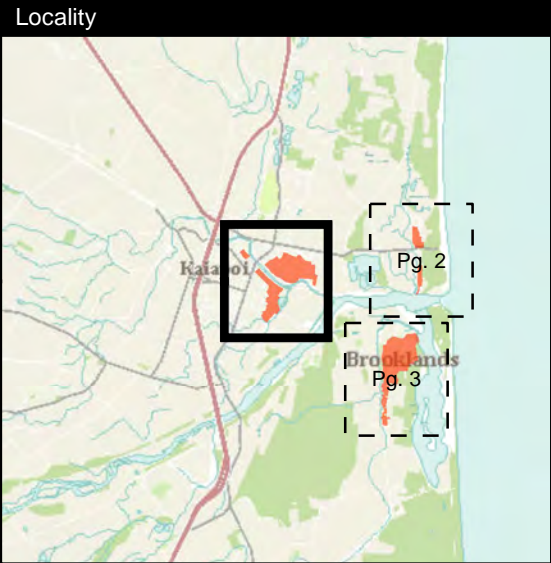
For re-prints and map production contact NorthSouth GIS:
Servicedesk@nsgnz.co.nz

IN CONFIDENCE
Restricted to Technical Panel Members Only



Legend
Publicly Owned Titles
Local Government
Other Publicly Owned Land
DOC Public Conservation Areas
LINZ - Titles 09/02/2015
Privately Owned Land (Within Residential Red Zone)
Crown Owned Land
Parks and Reserves
Tuhaitara Coastal Park
WDC Reserves

Map Purpose:
Map is a component of the technical theme map series produced to support the planning framework for the future use of the Residential Red Zone (FURZ).
Please note - Map supplied 'In Confidence' according to State Services Commission guidelines for more information see: <http://www.gcsb.govt.nz/newsroom/reports-publications.html>

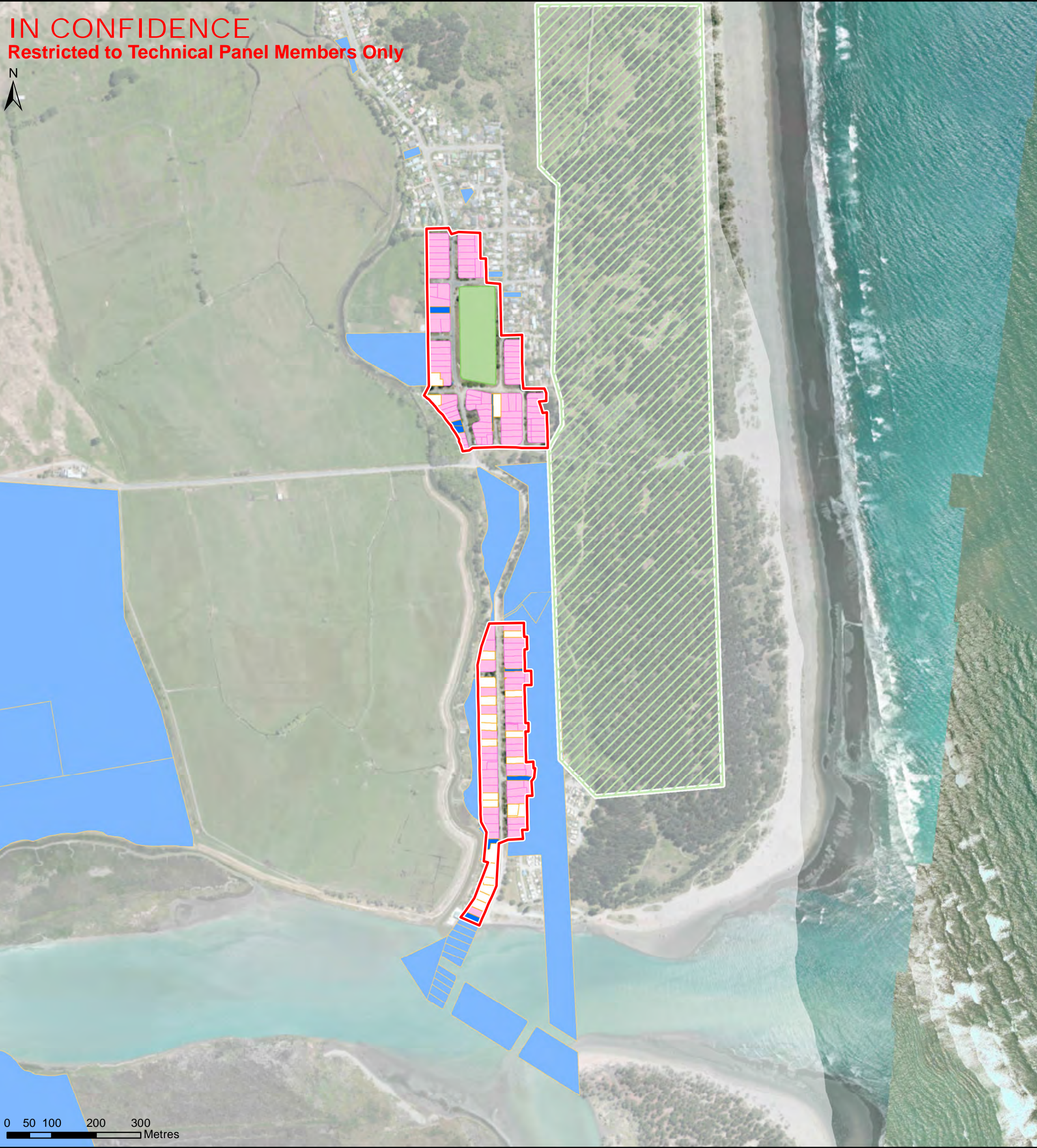


Publication Date:
9/02/2015
Scale:
1:8,000
(Original sheet size A3)

Disclaimer
This map is a static output of depicted layers and is for reference only. Data layers that appear on this map may or may not be accurate, current, or otherwise reliable.

Coordinate System:
NZGD 2000 New Zealand Transverse Mercator

Map Document:
6771 - FURZ Land Ownership.mxd
For re-prints and map production contact NorthSouth GIS: Servicedesk@nsgnz.co.nz



Legend

Publically Owned Titles

- Local Government
- Other Publically Owned Land
- DOC Public Conservation Areas

LINZ - Titles 09/02/2015

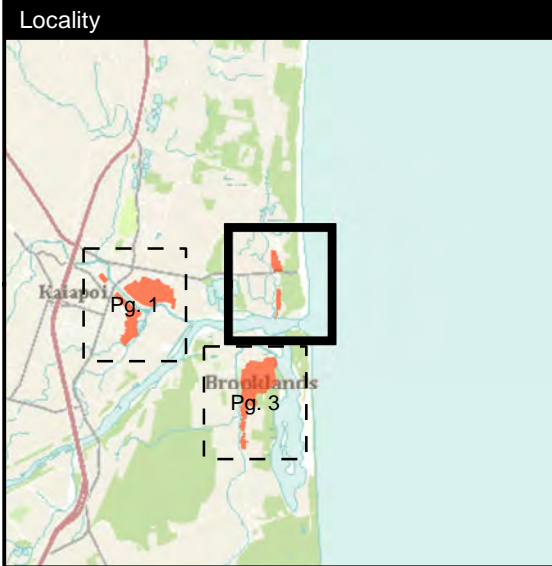
- Privately Owned Land (Within Residential Red Zone)
- Crown Owned Land

Parks and Reserves

- Tuhaitara Coastal Park
- WDC Reserves

Map Purpose:
Map is a component of the technical theme map series produced to support the planning framework for the future use of the Residential Red Zone (FURZ).

Please note - Map supplied 'In Confidence' according to State Services Commission guidelines for more information see: <http://www.gcsb.govt.nz/newsroom/reports-publications.html>



Publication Date:
9/02/2015

Scale:
1:8,000
(Original sheet size A3)

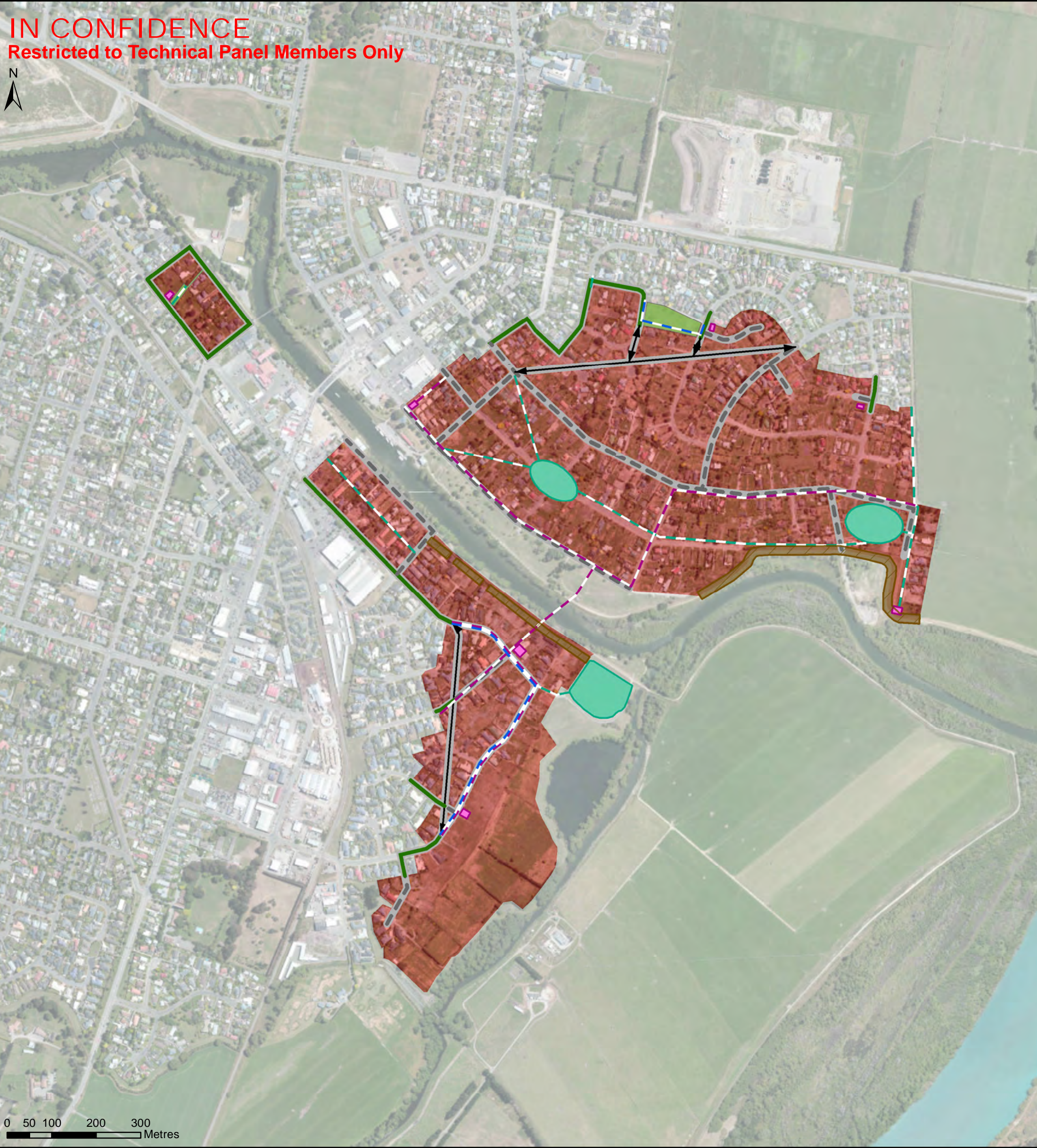
Disclaimer
This map is a static output of depicted layers and is for reference only. Data layers that appear on this map may or may not be accurate, current, or otherwise reliable.

Coordinate System:
NZGD 2000 New Zealand Transverse Mercator

Map Document:
6771 - FURZ Land Ownership.mxd

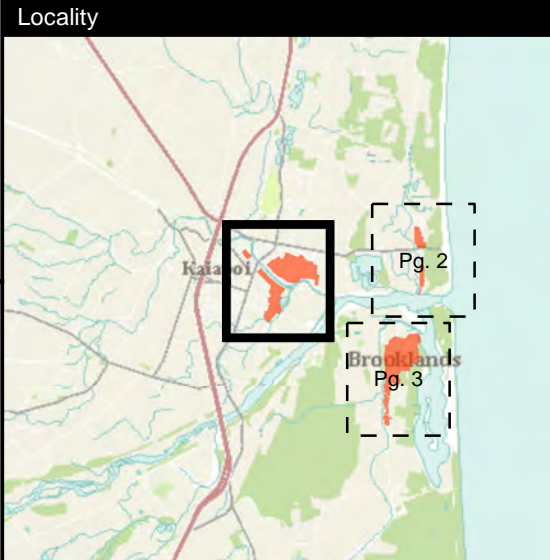
For re-prints and map production contact NorthSouth GIS:
Servicedesk@nsgnz.co.nz

IN CONFIDENCE
Restricted to Technical Panel Members Only



- Legend**
- | | |
|-------------------------------------|---|
| Potable Water Infrastructure | Residential Red Zone Roads |
| — Potable Water Pipe | — Retained permanently |
| Waste Water Infrastructure | — Retained until future use decisions have been confirmed |
| ■ Pump Station | ↔ Possible new road connection |
| — Sewer Lines | Council Land |
| Storm Water Infrastructure | ■ WDC Reserves |
| ■ Storm Water Management Area | ■ ECan stopbank reconstruction |
| — Storm Water Pipes | Land Check Colour Zones - December 2013 |
| | ■ Red Zone Extent |

Map Purpose:
Map is a component of the technical theme map series produced to support the planning framework for the future use of the Residential Red Zone (FURZ).
Please note - Map supplied 'In Confidence' according to State Services Commission guidelines for more information see: <http://www.gcsb.govt.nz/newsroom/reports-publications.html>



Publication Date:
9/02/2015

Scale:
1:8,000
(Original sheet size A3)

Disclaimer
This map is a static output of depicted layers and is for reference only. Data layers that appear on this map may or may not be accurate, current, or otherwise reliable.

Coordinate System:
NZGD 2000 New Zealand Transverse Mercator

Map Document:
6771 - FURZ WDC Infrastructure.mxd

For re-prints and map production contact NorthSouth GIS:
Servicedesk@nsgnz.co.nz

IN CONFIDENCE

Restricted to Technical Panel Members Only



- Legend**

Potable Water Infrastructure

 - Potable Water Pipe

Waste Water Infrastructure

 - Pump Station
 - Sewer Lines

Storm Water Infrastructure

 - Storm Water Management Area
 - Storm Water Pipes
- Residential Red Zone Roads**

 - Retained permanently
 - Retained until future use decisions have been confirmed
 - Possible new road connection

Council Land

 - WDC Reserves
 - ECan stopbank reconstruction

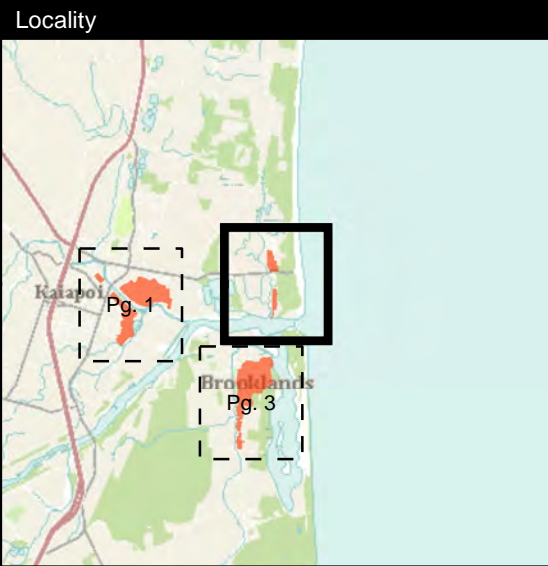
Land Check Colour Zones - December 2013

 - Red Zone Extent

Map Purpose:

Map is a component of the technical theme map series produced to support the planning framework for the future use of the Residential Red Zone (FURZ).

Please note - Map supplied 'In Confidence' according to State Services Commission guidelines for more information see: <http://www.gcsb.govt.nz/newsroom/reports-publications.html>



Publication Date:

9/02/2015

Scale:

1:8,000

(Original sheet size A3)

Disclaimer

This map is a static output of depicted layers and is for reference only. Data layers that appear on this map may or may not be accurate, current, or otherwise reliable.

Coordinate System:

NZGD 2000 New Zealand Transverse Mercator

Map Document:

6771 - FURZ WDC Infrastructure.mxd

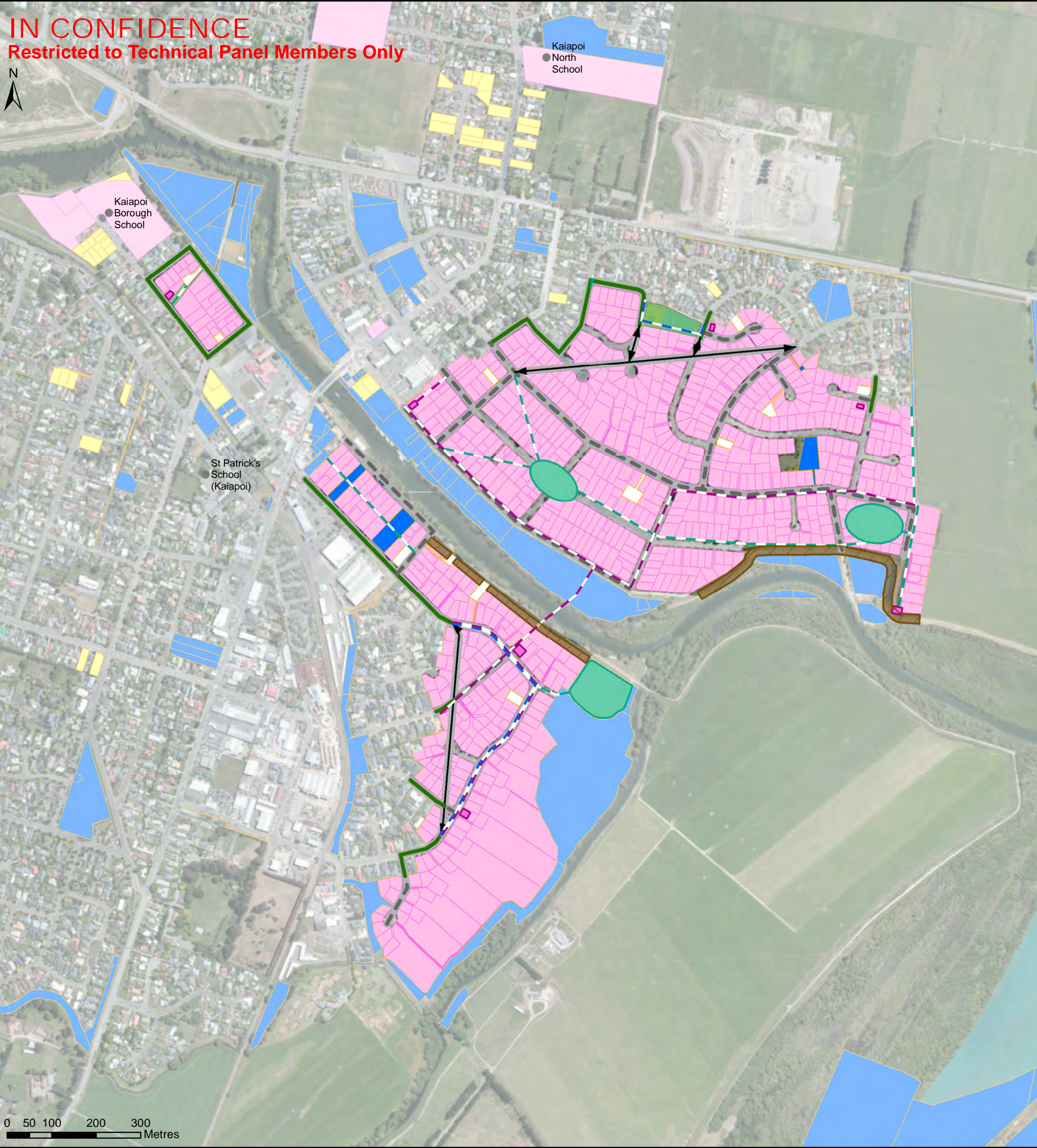
For re-prints and map production contact NorthSouth GIS: Servicedesk@nsgnz.co.nz

WDC Infrastructure and Land Ownership - Map 1 of 2

Red Zone Future Use - Technical Themes



IN CONFIDENCE
Restricted to Technical Panel Members Only

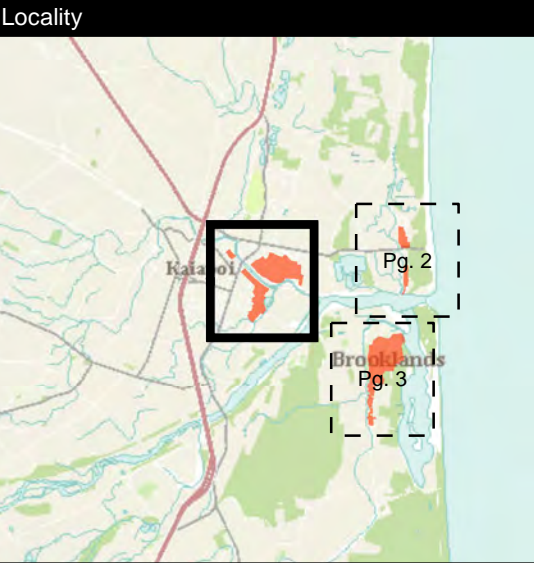


Legend	
Potable Water Infrastructure	Council Land
— Potable Water Pipe	— ECan stopbank reconstruction
Waste Water Infrastructure	Publicly Owned Titles
■ Pump Station	■ Local Government
— Sewer Lines	■ Other Publically Owned Land
Storm Water Infrastructure	■ DOC Public Conservation Areas
■ Storm Water Management Area	Parks and Reserves
— Storm Water Pipes	■ Tuhaitara Coastal Park
Residential Red Zone Roads	■ WDC Reserves
— Retained permanently	LINZ - Titles 09/02/2015
— Retained until future use decisions have been confirmed	■ Privately Owned Land
↔ Possible new road connection	■ Crown Owned Land

Map Purpose:

Map is a component of the technical theme map series produced to support the planning framework for the future use of the Residential Red Zone (FURZ).

Please note - Map supplied 'In Confidence' according to State Services Commission guidelines for more information see: <http://www.gcsb.govt.nz/newsroom/reports-publications.html>



Publication Date:
9/02/2015

Scale:
1:8,000
(Original sheet size A3)

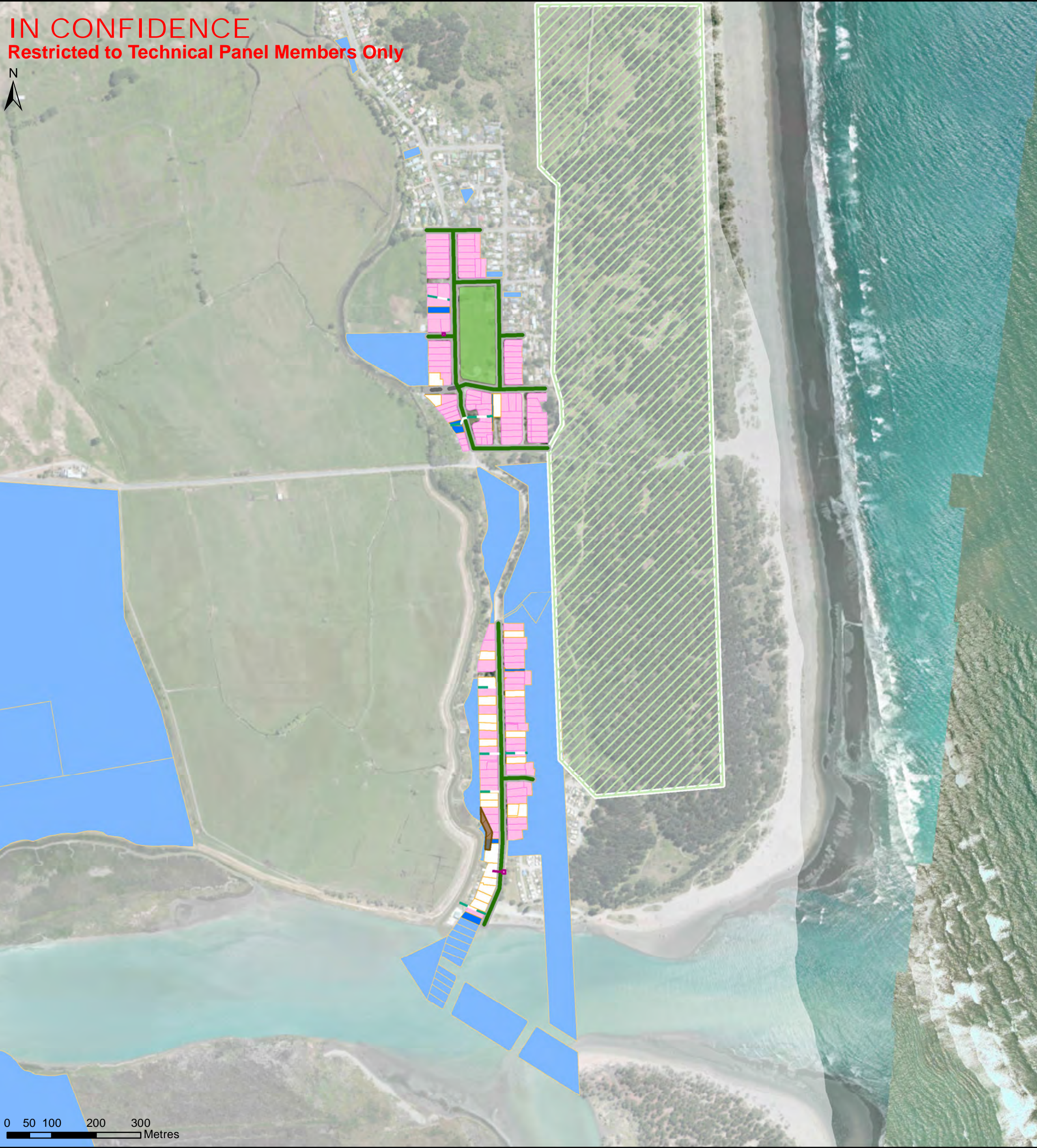
Disclaimer
This map is a static output of depicted layers and is for reference only. Data layers that appear on this map may or may not be accurate, current, or otherwise reliable.

Coordinate System:
NZGD 2000 New Zealand Transverse Mercator

Map Document:
6771 - FURZ WDC Infra and Ownership.mxd

For re-prints and map production contact NorthSouth GIS:
Servicedesk@nsgnz.co.nz

IN CONFIDENCE
Restricted to Technical Panel Members Only



Legend

Potable Water Infrastructure
Potable Water Pipe

Waste Water Infrastructure
Pump Station
Sewer Lines

Storm Water Infrastructure
Storm Water Management Area
Storm Water Pipes

Residential Red Zone Roads
Retained permanently
Retained until future use decisions have been confirmed
Possible new road connection

Council Land
ECan stopbank reconstruction

Publically Owned Titles
Local Government
Other Publically Owned Land
DOC Public Conservation Areas

Parks and Reserves
Tuhaitara Coastal Park
WDC Reserves

LINZ - Titles 09/02/2015
Privately Owned Land
Crown Owned Land

Map Purpose:
Map is a component of the technical theme map series produced to support the planning framework for the future use of the Residential Red Zone (FURZ).

Please note - Map supplied 'In Confidence' according to State Services Commission guidelines for more information see: <http://www.gcsb.govt.nz/newsroom/reports-publications.html>

Locality

Publication Date:
9/02/2015

Scale:
1:8,000
(Original sheet size A3)

Disclaimer
This map is a static output of depicted layers and is for reference only. Data layers that appear on this map may or may not be accurate, current, or otherwise reliable.

Coordinate System:
NZGD 2000 New Zealand Transverse Mercator

Map Document:
6771 - FURZ WDC Infra and Ownership.mxd

For re-prints and map production contact NorthSouth GIS:
Servicedesk@nsgnz.co.nz

IN CONFIDENCE
Restricted to Technical Panel Members Only



Legend

Land Check Colour Zones - December 2013

Red Zone Boundary

WDC Protected Trees

Tuhaitara Coastal Park

WDC Reserves

Hydrological Features

Rivers and Lakes

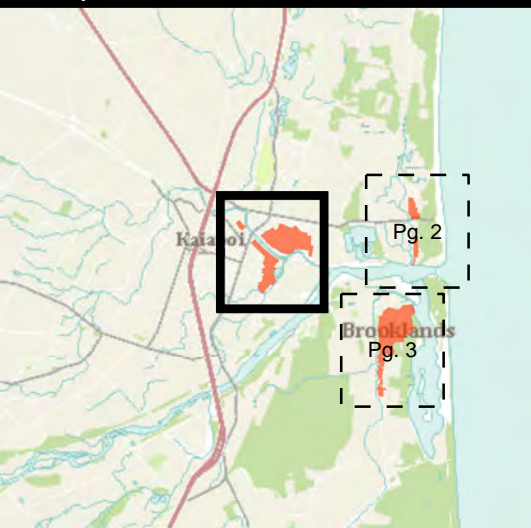
30m Riparian Zone

Map Purpose:

Map is a component of the technical theme map series produced to support the planning framework for the future use of the Residential Red Zone (FURZ).

Please note - Map supplied 'In Confidence' according to State Services Commission guidelines for more information see: <http://www.gcsb.govt.nz/newsroom/reports-publications.html>

Locality



Publication Date:
9/02/2015

Scale:
1:8,000
(Original sheet size A3)

Disclaimer

This map is a static output of depicted layers and is for reference only. Data layers that appear on this map may or may not be accurate, current, or otherwise reliable.

Coordinate System:
NZGD 2000 New Zealand Transverse Mercator

Map Document:
6771 - FURZ Natural Environment.mxd

For re-prints and map production contact NorthSouth GIS:
Servicedesk@nsgnz.co.nz

IN CONFIDENCE
Restricted to Technical Panel Members Only



Legend

Land Check Colour Zones - December 2013

Red Zone Boundary

WDC Protected Trees

Tuhaitara Coastal Park

WDC Reserves

Hydrological Features

Rivers and Lakes

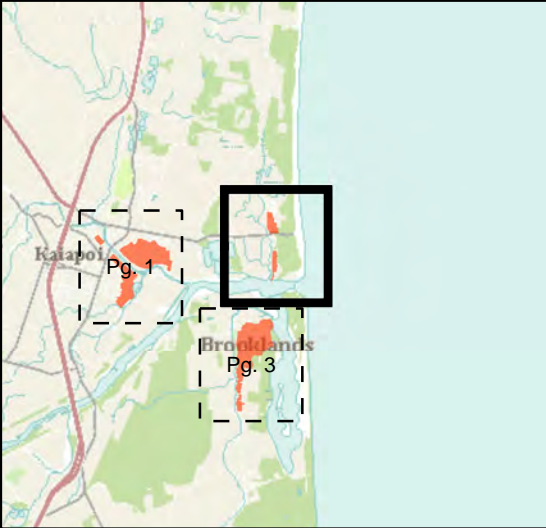
30m Riparian Zone

Map Purpose:

Map is a component of the technical theme map series produced to support the planning framework for the future use of the Residential Red Zone (FURZ).

Please note - Map supplied 'In Confidence' according to State Services Commission guidelines for more information see: <http://www.gcsb.govt.nz/newsroom/reports-publications.html>

Locality



Publication Date:

9/02/2015

Scale:

1:8,000

(Original sheet size A3)

Disclaimer

This map is a static output of depicted layers and is for reference only. Data layers that appear on this map may or may not be accurate, current, or otherwise reliable.

Coordinate System:

NZGD 2000 New Zealand Transverse Mercator

Map Document:

6771 - FURZ Natural Environment.mxd

For re-prints and map production contact NorthSouth GIS:
Servicedesk@nsgnz.co.nz

IN CONFIDENCE
Restricted to Technical Panel Members Only



Legend

Land Check Colour Zones - December 2013

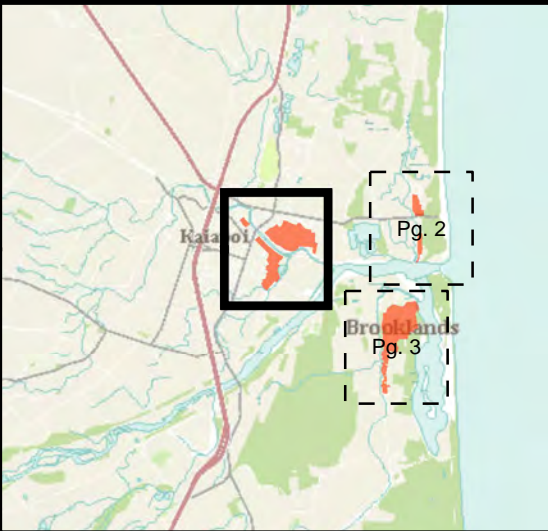
- Red Zone Boundary
- NZAA Archaeological Sites**
 - NZAA Point Site
 - NZAA Area Site (Known Location)
 - NZAA Area Site (Indicative Location)
- Parks and Reserves**
 - Tuhaitara Coastal Park

Map Purpose:

Map is a component of the Technical Theme map series produced to support the planning framework for the future use of the Residential Red Zone (FURZ).

Please note - Map supplied 'In Confidence' according to State Services Commission guidelines for more information see: <http://www.gcsb.govt.nz/newsroom/reports-publications.html>

Locality



Publication Date:
9/02/2015

Scale:
1:8,000
(Original sheet size A3)

Disclaimer
This map is a static output of depicted layers and is for reference only. Data layers that appear on this map may or may not be accurate, current, or otherwise reliable.

Coordinate System:
NZGD 2000 New Zealand Transverse Mercator

Map Document:
6771 - FURZ Archaeological.mxd

*For re-prints and map production contact NorthSouth GIS:
Servicedesk@nsgnz.co.nz*

IN CONFIDENCE
Restricted to Technical Panel Members Only



Legend

Land Check Colour Zones - December 2013

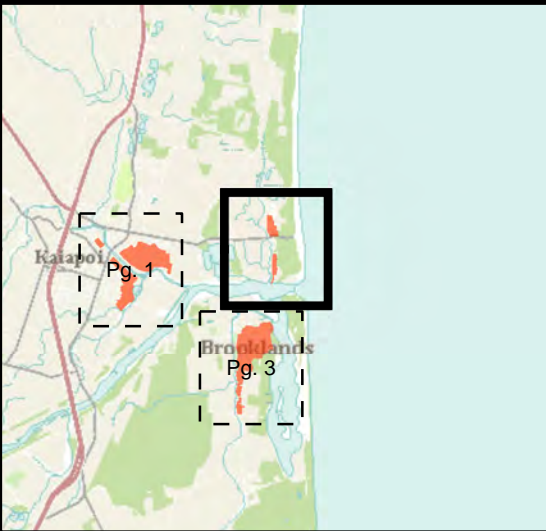
- Red Zone Boundary
- NZAA Archaeological Sites
 - NZAA Point Site
 - NZAA Area Site (Known Location)
 - NZAA Area Site (Indicative Location)
- Parks and Reserves
 - Tuhaitara Coastal Park

Map Purpose:

Map is a component of the Technical Theme map series produced to support the planning framework for the future use of the Residential Red Zone (FURZ).

Please note - Map supplied 'In Confidence' according to State Services Commission guidelines for more information see: <http://www.gcsb.govt.nz/newsroom/reports-publications.html>

Locality



Publication Date:
9/02/2015

Scale:
1:8,000
(Original sheet size A3)

Disclaimer

This map is a static output of depicted layers and is for reference only. Data layers that appear on this map may or may not be accurate, current, or otherwise reliable.

Coordinate System:
NZGD 2000 New Zealand Transverse Mercator

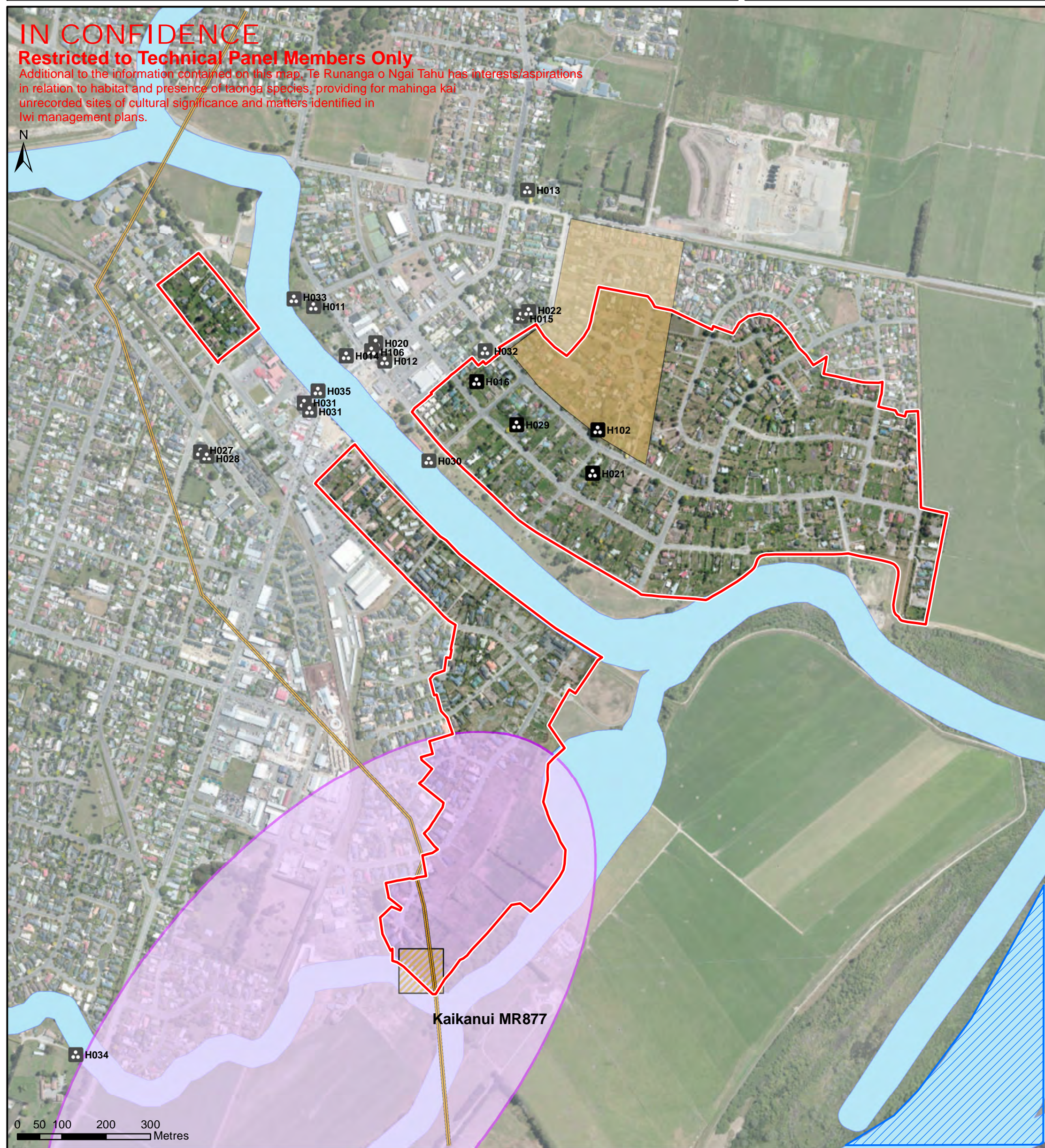
Map Document:
6771 - FURZ Archaeological.mxd

For re-prints and map production contact NorthSouth GIS:
Servicedesk@nsgnz.co.nz

IN CONFIDENCE

Restricted to Technical Panel Members Only

Additional to the information contained on this map, Te Runanga o Ngai Tahu has interests/aspirations in relation to habitat and presence of taonga species, providing for mahinga kai unrecorded sites of cultural significance and matters identified in lwi management plans.



Legend

Land Check Colour Zones - December 2013

- Red Zone Boundary

Nga ara Tawhito (Tradition)

- == Indicative Loc

Cultural Heritage Site


- Heritage Site

- ## NZAA Archaeological

Culturally Significant Zone

- Indicative

Parks and Reserves

-  Tuhaitara Coastal Park

Coastal Marine Area

- Indicative Boundary

 30m Riparian Zone

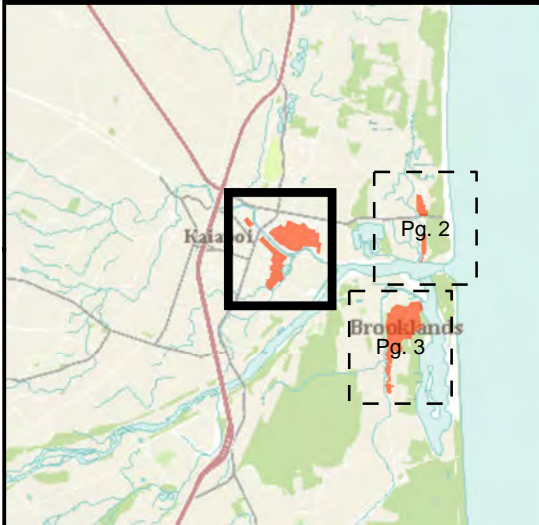
- ## Statutory Acknowledgment

Map Purpose:

Map is a component of the Technical Theme map series produced to support the planning framework for the future use of the Residential Red Zone (FURZ).

Please note - Map supplied 'In Confidence' according to State Services Commission guidelines
For more information see <http://www.ssc.govt.nz/your-services/your-services/your-services>

Locality

**Publication Date:**

3/06/2015

Scale:

1:8,000

(Original sheet size A3)

Disclaimer

This map is a static output of depicted layers and is for reference only. Data layers that appear on this map may or may not be accurate, current, or otherwise reliable.

Coordinate System:

NZGD 2000 New Zealand Transverse Mercator

Map Document:

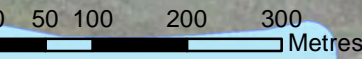
6771 - FURZ Cultural - 20150603.mxd

For re-prints and map production contact NorthSouth GIS:

Servicedesk@nsgnz.co.nz

IN CONFIDENCE
Restricted to Technical Panel Members Only

Additional to the information contained on this map, Te Runanga o Ngai Tahu has interests/aspirations in relation to habitat and presence of taonga species, providing for mahinga kai unrecorded sites of cultural significance and matters identified in Iwi management plans.



Legend

Land Check Colour Zones - December 2013

Red Zone Boundary

Nga ara Tawhito (Traditional Travel Routes)

Indicative Location

Cultural Heritage Sites

Heritage Site

NZAA Archaeological

NZAA Point Site

NZAA Area Site (Known Location)

NZAA Area Site (Indicative Location)

Culturally Significant Zone

Indicative

Parks and Reserves

Tuhaitara Coastal Park

Coastal Marine Area

Indicative Boundary

30m Riparian Zone

Statutory Acknowledgment

Kaikoura Coastal Marine

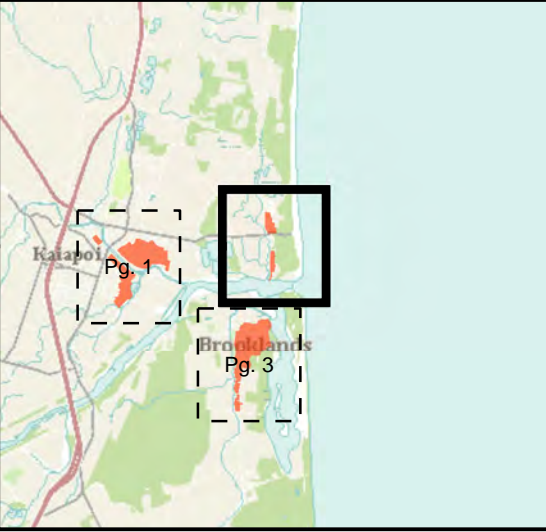
Banks Peninsula Coastal Marine

Map Purpose:

Map is a component of the Technical Theme map series produced to support the planning framework for the future use of the Residential Red Zone (FURZ).

Please note - Map supplied 'In Confidence' according to State Services Commission guidelines for more information see: <http://www.gcsb.govt.nz/newsroom/reports-publications.html>

Locality



Publication Date:

3/06/2015

Scale:

1:8,000

(Original sheet size A3)

Disclaimer

This map is a static output of depicted layers and is for reference only. Data layers that appear on this map may or may not be accurate, current, or otherwise reliable.

Coordinate System:

NZGD 2000 New Zealand Transverse Mercator

Map Document:

6771 - FURZ Cultural - 20150603.mxd

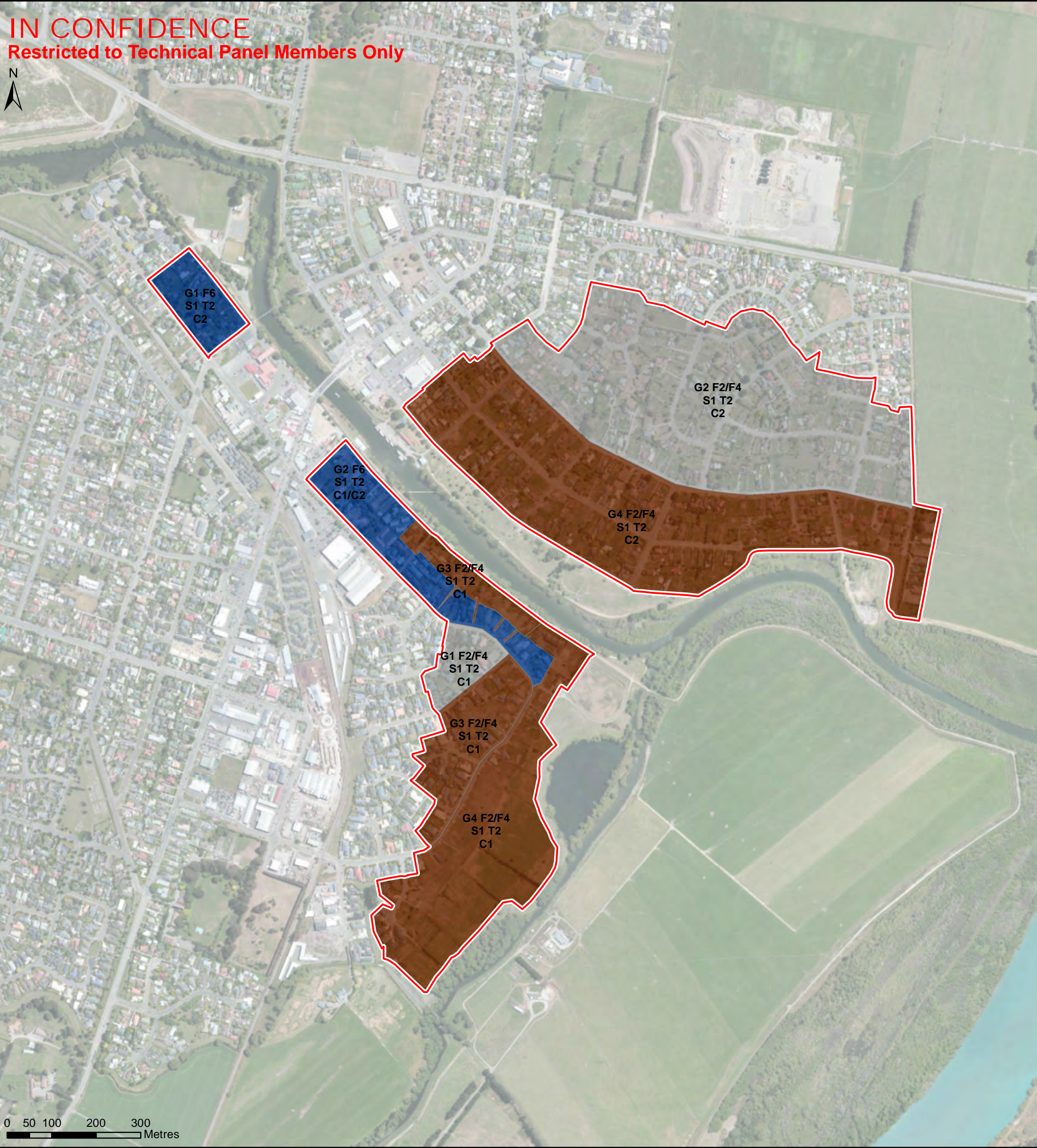
For re-prints and map production contact NorthSouth GIS:
Servicedesk@nsgnz.co.nz

Overall Remediation Feasibility - Map 1 of 2

Red Zone Future Use - Technical Themes



IN CONFIDENCE
Restricted to Technical Panel Members Only



Legend

Land Check Colour Zones - December 2013

Red Zone Boundary

Residential Red Zone - Dominant Remediation Feasibility Category

No Dominant Category

Sea Level Rise

Geotechnical

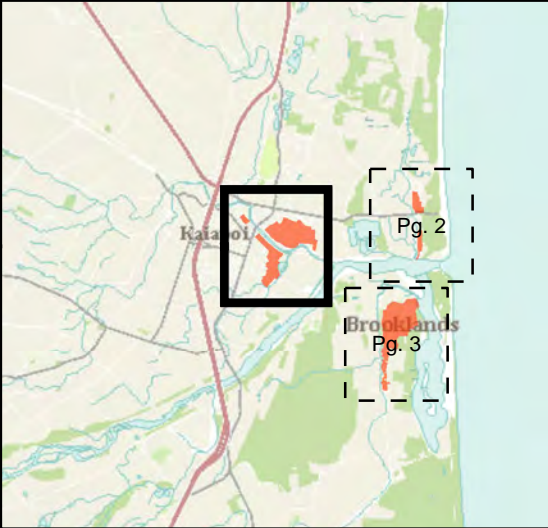
Flooding

Map Purpose:

Map is a component of the technical theme map series produced to support the planning framework for the future use of the Residential Red Zone (FURZ).

Please note - Map supplied 'In Confidence' according to State Services Commission guidelines for more information see: <http://www.gcsb.govt.nz/newsroom/reports-publications.html>

Locality



Publication Date:

9/02/2015

Scale:

1:8,000

(Original sheet size A3)

Disclaimer

This map is a static output of depicted layers and is for reference only. Data layers that appear on this map may or may not be accurate, current, or otherwise reliable.

Coordinate System:

NZGD 2000 New Zealand Transverse Mercator

Map Document:

6771 - FURZ Remediation Feasibility Overall.mxd

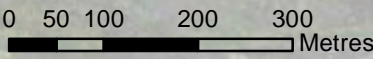
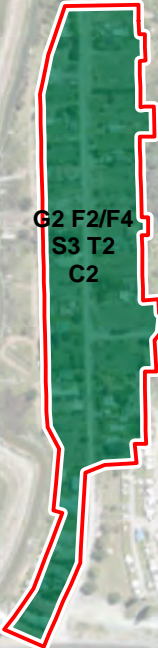
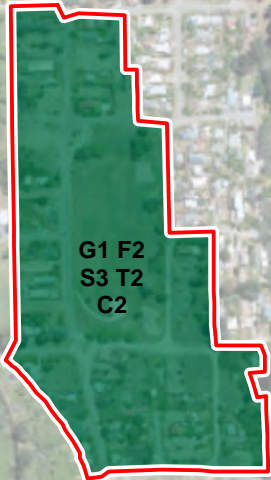
For re-prints and map production contact NorthSouth GIS:
Servicedesk@nsgnz.co.nz

Overall Remediation Feasibility - Map 2 of 2

Red Zone Future Use - Technical Themes



IN CONFIDENCE
Restricted to Technical Panel Members Only



Legend

Land Check Colour Zones - December 2013

Red Zone Boundary

Residential Red Zone - Dominant Remediation Feasibility Category

No Dominant Category

Sea Level Rise

Geotechnical

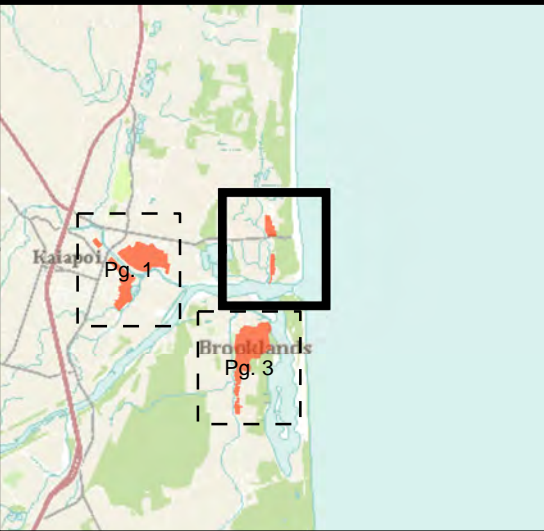
Flooding

Map Purpose:

Map is a component of the technical theme map series produced to support the planning framework for the future use of the Residential Red Zone (FURZ).

Please note - Map supplied 'In Confidence' according to State Services Commission guidelines for more information see: <http://www.gcsb.govt.nz/newsroom/reports-publications.html>

Locality



Publication Date:

9/02/2015

Scale:

1:8,000

(Original sheet size A3)

Disclaimer

This map is a static output of depicted layers and is for reference only. Data layers that appear on this map may or may not be accurate, current, or otherwise reliable.

Coordinate System:

NZGD 2000 New Zealand Transverse Mercator

Map Document:

6771 - FURZ Remediation Feasibility Overall.mxd

For re-prints and map production contact NorthSouth GIS:
Servicedesk@nsgnz.co.nz

IN CONFIDENCE

Restricted to Technical Panel Members Only



Potable Water Infrastructure

Potable Water Pipe

Waste Water Infrastructure

Pump Station

Sewer Lines

Storm Water Infrastructure

Storm Water Management Area

Storm Water Pipes

Council Land

WDC Reserves

ECan stopbank reconstruction

Residential Red Zone Roads

Retained permanently

Retained until future use decisions have been confirmed

Possible new road connection

Residential Red Zone - Dominant Remediation Feasibility Category

No Dominant Category

Sea Level Rise

Geotechnical

Flooding

Map Purpose:

Map is a component of the technical theme map series produced to support the planning framework for the future use of the Residential Red Zone (FURZ).

Please note - Map supplied 'In Confidence' according to State Services Commission guidelines for more information see: <http://www.gcsb.govt.nz/newsroom/reports-publications.html>

Locality

Publication Date:

9/02/2015

Scale:

1:8,000

(Original sheet size A3)

Disclaimer

This map is a static output of depicted layers and is for reference only. Data layers that appear on this map may or may not be accurate, current, or otherwise reliable.

Coordinate System:

NZGD 2000 New Zealand Transverse Mercator

Map Document:

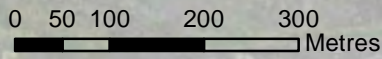
6771 - FURZ WDC Infra and Remediation Overall.mxd

For re-prints and map production contact NorthSouth GIS:

Servicedesk@nsgnz.co.nz

IN CONFIDENCE

Restricted to Technical Panel Members Only



Legend

Potable Water Infrastructure
Potable Water Pipe

Waste Water Infrastructure
Pump Station
Sewer Lines

Storm Water Infrastructure
Storm Water Management Area
Storm Water Pipes

Council Land
WDC Reserves
ECan stopbank reconstruction

Residential Red Zone Roads
Retained permanently
Retained until future use decisions have been confirmed
Possible new road connection

Residential Red Zone - Dominant Remediation Feasibility Category
No Dominant Category
Sea Level Rise
Geotechnical
Flooding

Map Purpose:
Map is a component of the technical theme map series produced to support the planning framework for the future use of the Residential Red Zone (FURZ).

Please note - Map supplied 'In Confidence' according to State Services Commission guidelines for more information see: <http://www.gcsb.govt.nz/newsroom/reports-publications.html>

Locality

Publication Date:
9/02/2015

Scale:
1:8,000
(Original sheet size A3)

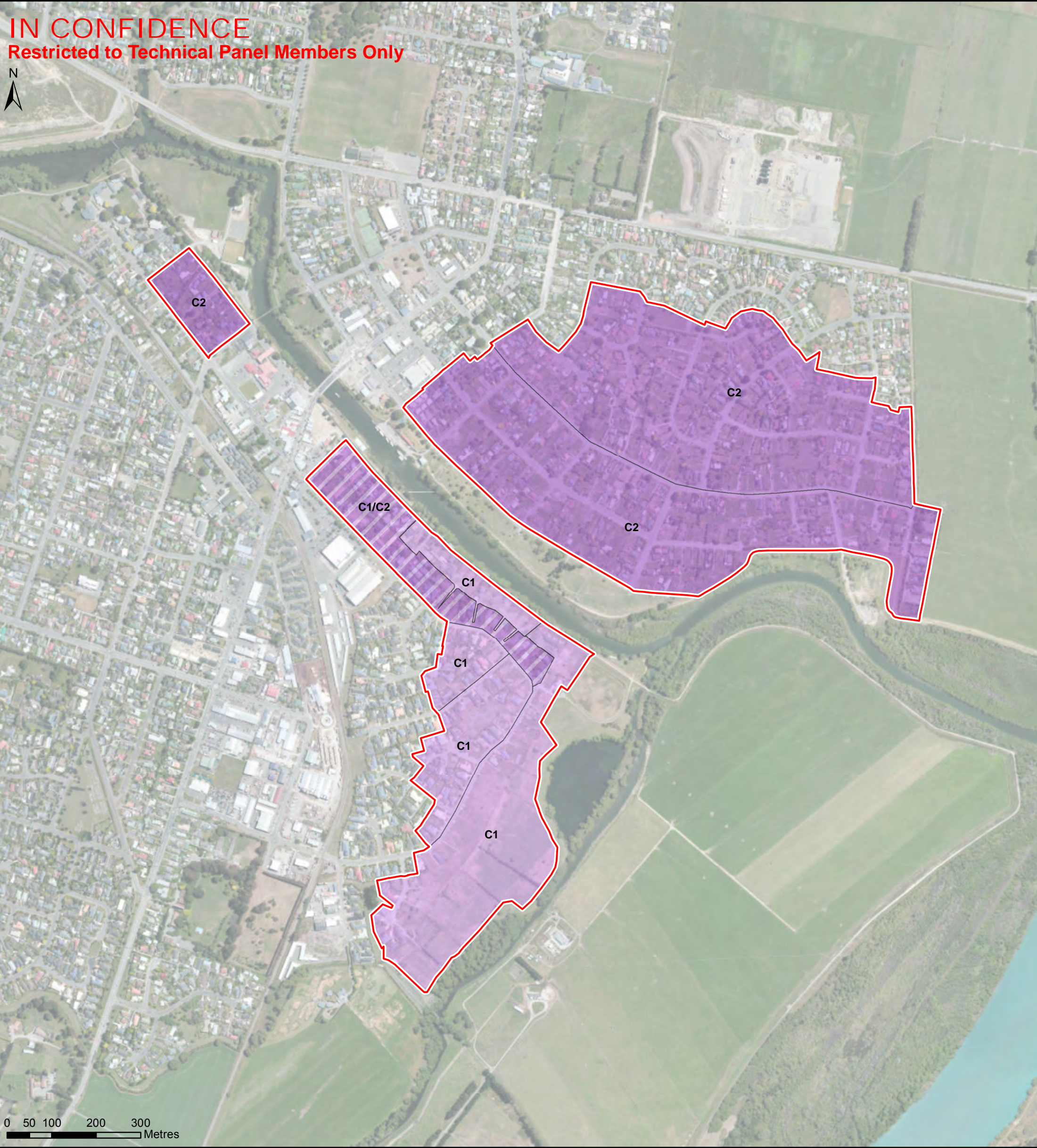
Disclaimer
This map is a static output of depicted layers and is for reference only. Data layers that appear on this map may or may not be accurate, current, or otherwise reliable.

Coordinate System:
NZGD 2000 New Zealand Transverse Mercator

Map Document:
6771 - FURZ WDC Infra and Remediation Overall.mxd

For re-prints and map production contact NorthSouth GIS:
Servicedesk@nsgnz.co.nz

IN CONFIDENCE
Restricted to Technical Panel Members Only



Legend

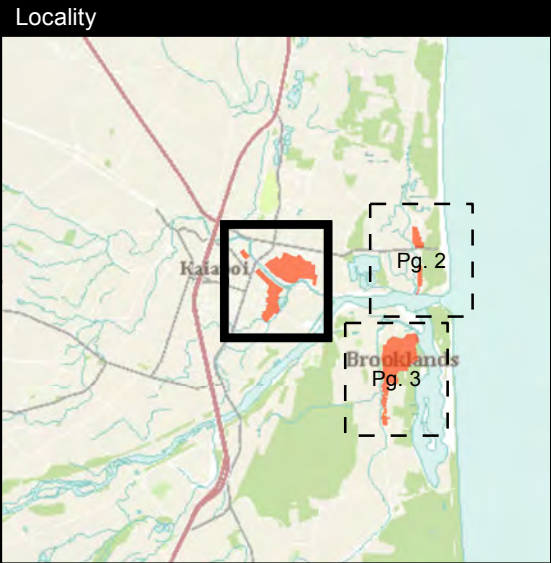
The categories shown in this Legend are explained more fully in the attached document titled "XXXXX" and which should be read in conjunction with this map.

Residential Red Zone - Contaminated Remediation Feasibility

- C1 (No known ground contamination)
- C1/C2 (Combination of C1 & C2)
- C2 (No known ground contamination but potential for asbestos from demolition)
- C3 (Minor ground contamination)
- C4 (Moderate ground contamination)
- C5 (Major ground contamination)
- C6 (Major ground contamination where remediation unlikely to be feasible or cost-effective)

Map Purpose:
Map is a component of the Remediation Feasibility map series produced to support the planning framework for the future use of the Residential Red Zone (FURZ).

Please note - Map supplied 'In Confidence' according to State Services Commission guidelines for more information see: <http://www.gcsb.govt.nz/newsroom/reports-publications.html>



Publication Date:
9/02/2015

Scale:
1:8,000
(Original sheet size A3)

Disclaimer
This map is a static output of depicted layers and is for reference only. Data layers that appear on this map may or may not be accurate, current, or otherwise reliable.

Coordinate System:
NZGD 2000 New Zealand Transverse Mercator

Map Document:
6771 - FURZ Remediation Feasibility Contamination.mxd

*For re-prints and map production contact NorthSouth GIS:
Servicedesk@nsgnz.co.nz*

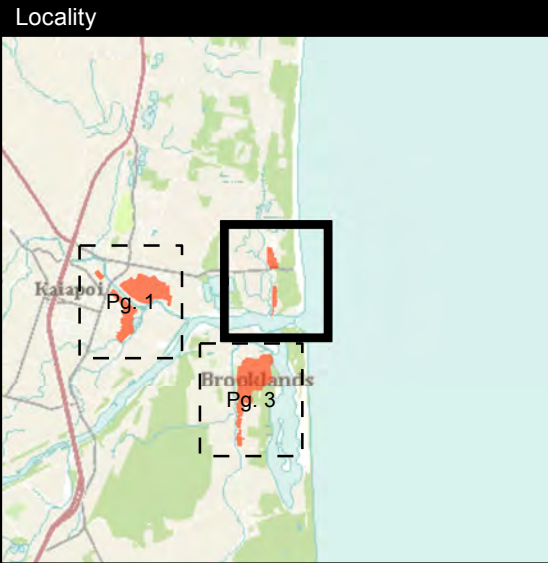
IN CONFIDENCE
Restricted to Technical Panel Members Only



Legend
The categories shown in this Legend are explained more fully in the attached document titled "XXXXX" and which should be read in conjunction with this map.

- Residential Red Zone - Contaminated Remediation Feasibility**
- C1 (No known ground contamination)
 - C1/C2 (Combination of C1 & C2)
 - C2 (No known ground contamination but potential for asbestos from demolition)
 - C3 (Minor ground contamination)
 - C4 (Moderate ground contamination)
 - C5 (Major ground contamination)
 - C6 (Major ground contamination where remediation unlikely to be feasible or cost-effective)

Map Purpose:
Map is a component of the Remediation Feasibility map series produced to support the planning framework for the future use of the Residential Red Zone (FURZ).
Please note - Map supplied 'In Confidence' according to State Services Commission guidelines for more information see: <http://www.gcsb.govt.nz/newsroom/reports-publications.html>



Publication Date:
9/02/2015

Scale:
1:8,000
(Original sheet size A3)

Disclaimer
This map is a static output of depicted layers and is for reference only. Data layers that appear on this map may or may not be accurate, current, or otherwise reliable.

Coordinate System:
NZGD 2000 New Zealand Transverse Mercator

Map Document:
6771 - FURZ Remediation Feasibility Contamination.mxd

For re-prints and map production contact NorthSouth GIS:
Servicedesk@nsgnz.co.nz

IN CONFIDENCE
Restricted to Technical Panel Members Only

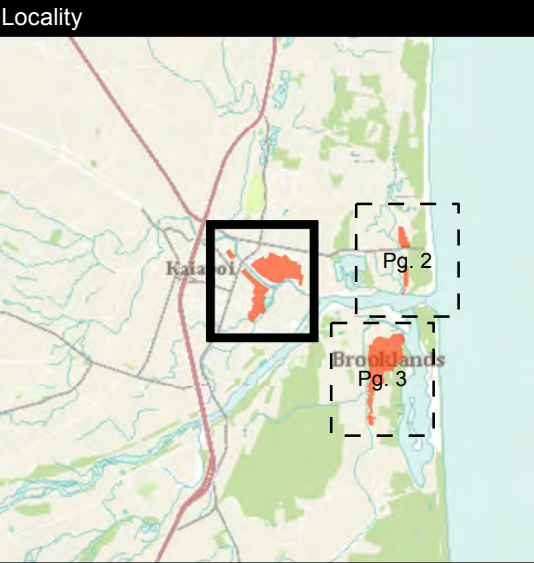


Legend
The categories shown in this Legend are explained more fully in the attached document titled "XXXXX" and which should be read in conjunction with this map.

ECan - Listed Land Use Register

- Activities
- Sites
- Investigations

Map Purpose:
Map is a component of the Remediation Feasibility map series produced to support the planning framework for the future use of the Residential Red Zone (FURZ).
Please note - Map supplied 'In Confidence' according to State Services Commission guidelines for more information see: <http://www.gcsb.govt.nz/newsroom/reports-publications.html>



Publication Date:
9/02/2015

Scale:
1:8,000
(Original sheet size A3)

Disclaimer
This map is a static output of depicted layers and is for reference only. Data layers that appear on this map may or may not be accurate, current, or otherwise reliable.

Coordinate System:
NZGD 2000 New Zealand Transverse Mercator

Map Document:
6771 - FURZ HAIL.mxd

For re-prints and map production contact NorthSouth GIS:
Servicedesk@nsgnz.co.nz

IN CONFIDENCE
Restricted to Technical Panel Members Only



Legend
The categories shown in this Legend are explained more fully in the attached document titled "XXXXX" and which should be read in conjunction with this map.

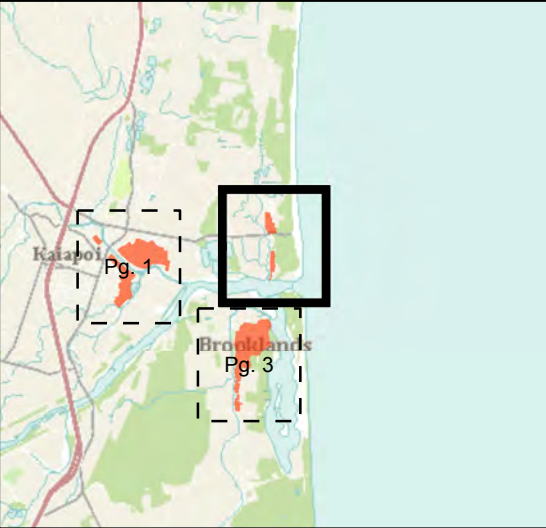
ECan - Listed Land Use Register

-  Activities
-  Sites
-  Investigations

Map Purpose:

Map is a component of the Remediation Feasibility map series produced to support the planning framework for the future use of the Residential Red Zone (FURZ).
Please note - Map supplied 'In Confidence' according to State Services Commission guidelines for more information see: <http://www.gcsb.govt.nz/newsroom/reports-publications.html>

Locality



Publication Date:
9/02/2015

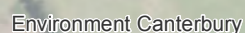
Scale:
1:8,000
(Original sheet size A3)

Disclaimer
This map is a static output of depicted layers and is for reference only. Data layers that appear on this map may or may not be accurate, current, or otherwise reliable.

Coordinate System:
NZGD 2000 New Zealand Transverse Mercator

Map Document:
6771 - FURZ HAIL.mxd

For re-prints and map production contact NorthSouth GIS:
Servicedesk@nsgnz.co.nz



The categories shown in this Legend are explained more fully in the attached document titled "XXXXX" and which should be read in conjunction with this map.

 Activities
 Sites
 Investigations

Map is a component of the Remediation Feasibility map series produced to support the planning framework for the future use of the Residential Red Zone (FURZ).

Please note - Map supplied 'In Confidence' according to State Services Commission guidelines
for more information see: <http://www.qcsb.govt.nz/newsroom/reports-publications.html>

For re-prints and map production contact NorthSouth GIS:
Servicedesk@nsgnz.co.nz



Legend

The categories shown in this Legend are explained more fully in the attached document titled "XXXXX" and which should be read in conjunction with this map.

Residential Red Zone - Contaminated Remediation ECan - Listed Land Use Register Feasibility

C1 (No known ground contamination)

C1/C2 (Combination of C1 & C2)

C2 (No known ground contamination but potential for asbestos from demolition)

C3 (Minor ground contamination)

C4 (Moderate ground contamination)

C5 (Major ground contamination)

C6 (Major ground contamination where remediation unlikely to be feasible or cost-effective)

Activities

Sites

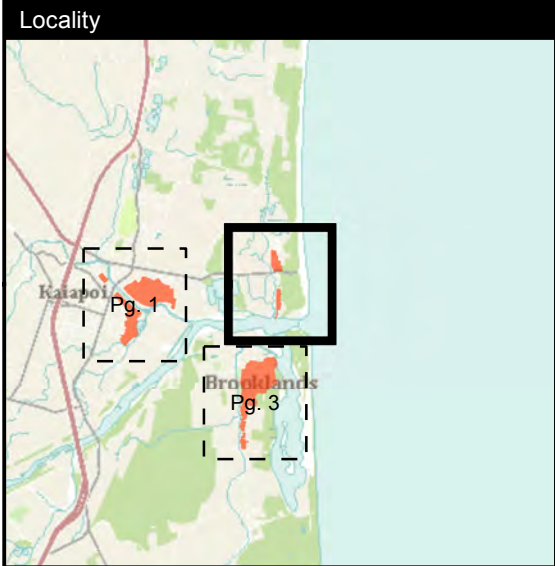
Investigations

Map Purpose:

Map is a component of the Remediation Feasibility map series produced to support the planning framework for the future use of the Residential Red Zone (FURZ).

Please note - Map supplied 'In Confidence' according to State Services Commission guidelines for more information see: <http://www.gcsb.govt.nz/newsroom/reports-publications.html>

Locality



Publication Date:
9/02/2015

Scale:
1:8,000
(Original sheet size A3)

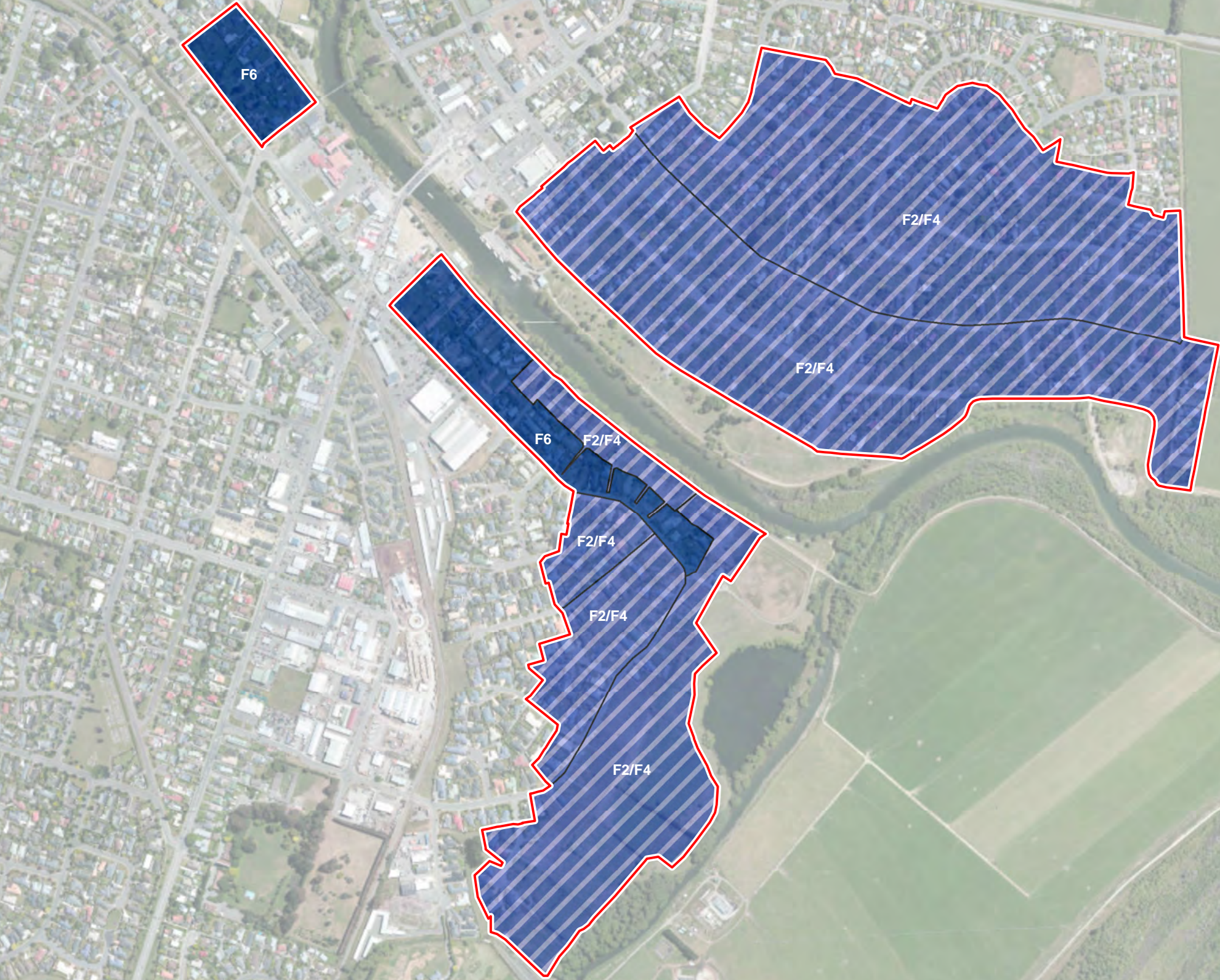
Disclaimer
This map is a static output of depicted layers and is for reference only. Data layers that appear on this map may or may not be accurate, current, or otherwise reliable.

Coordinate System:
NZGD 2000 New Zealand Transverse Mercator

Map Document:
6771 - FURZ HAIL and Contamination.mxd

For re-prints and map production contact NorthSouth GIS:
Servicedesk@nsgnz.co.nz

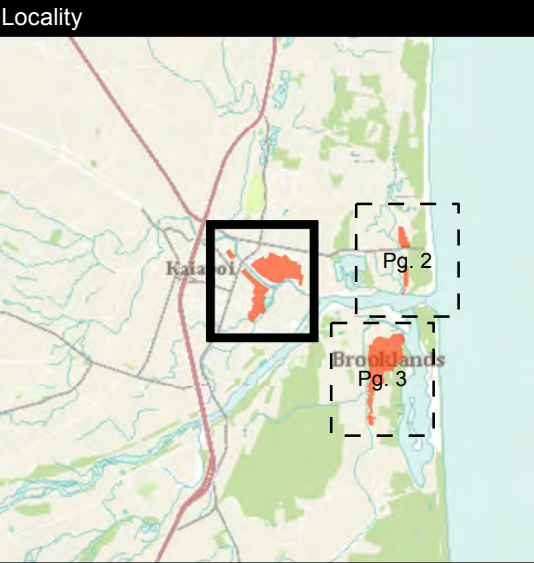
IN CONFIDENCE
 Restricted to Technical Panel Members Only



Legend
 The categories shown in this Legend are explained more fully in the attached document titled "XXXXX" and which should be read in conjunction with this map.

- Residential Red Zone - Flooding Remediation Feasibility**
- F1 - Return period for extensive flooding > 200 years
 - F2 - Return period for extensive flooding >100 years and ≤ 200 years
 - F2/F4 (Combination of F2 & F4)
 - F3 - Return period for extensive flooding > 50 years and ≤ 100 years
 - F4 - Return period for extensive flooding ≤ 50 years (possible to raise land but requires investigation)
 - F5 - Return Period for extensive flooding ≤ 50 years (suitable for landuse at current level which accepts or mitigates flood hazard. Raising land only where effects off-set elsewhere)
 - F6 - Return Period for extensive flooding ≤ 50 years (suitable for landuse at current level. Cannot raise without flooding Green Zone)

Map Purpose:
 Map is a component of the Remediation Feasibility map series produced to support the planning framework for the future use of the Residential Red Zone (FURZ).
 Please note - Map supplied 'In Confidence' according to State Services Commission guidelines for more information see: <http://www.gcsb.govt.nz/newsroom/reports-publications.html>



Publication Date:
 9/02/2015
Scale:
 1:8,000
 (Original sheet size A3)
Disclaimer
 This map is a static output of depicted layers and is for reference only. Data layers that appear on this map may or may not be accurate, current, or otherwise reliable.
Coordinate System:
 NZGD 2000 New Zealand Transverse Mercator
Map Document:
 6771 - FURZ Remediation Feasibility Flooding.mxd
 For re-prints and map production contact NorthSouth GIS: Servicedesk@nsgnz.co.nz

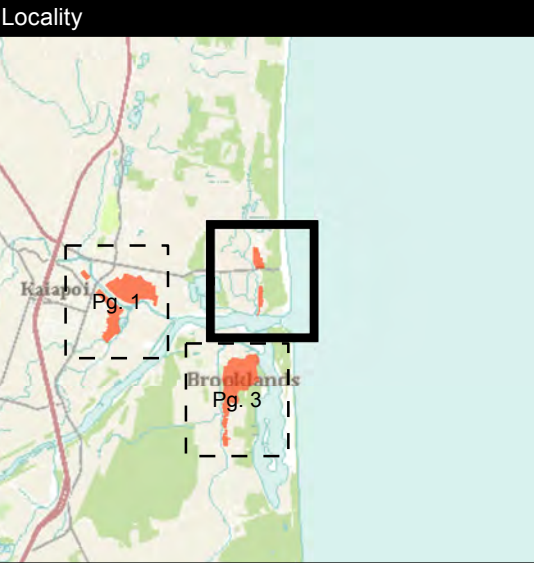
IN CONFIDENCE
 Restricted to Technical Panel Members Only



Legend
 The categories shown in this Legend are explained more fully in the attached document titled "XXXXX" and which should be read in conjunction with this map.

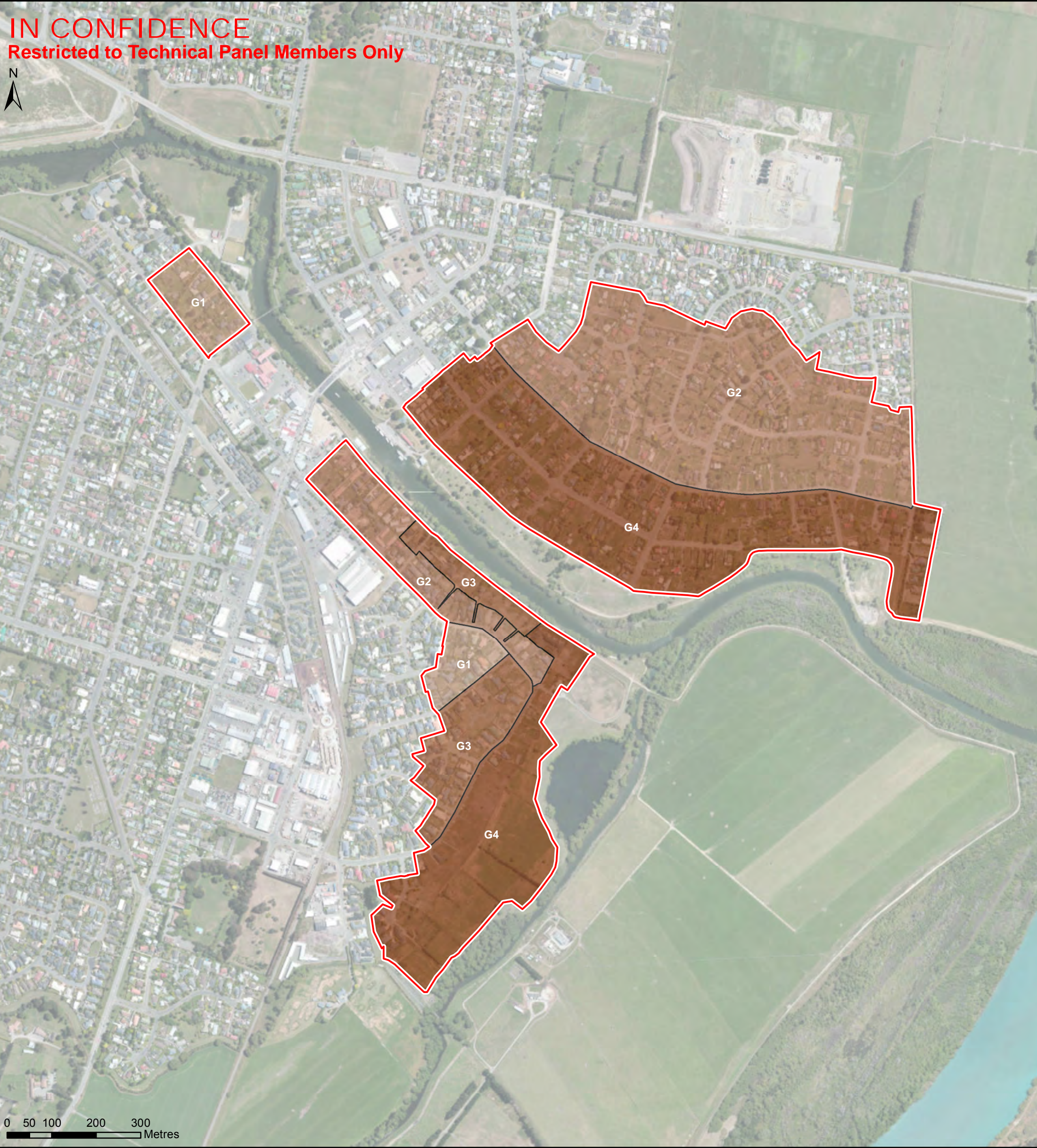
- Residential Red Zone - Flooding Remediation Feasibility**
- F1 - Return period for extensive flooding > 200 years
 - F2 - Return period for extensive flooding >100 years and ≤ 200 years
 - F2/F4 (Combination of F2 & F4)
 - F3 - Return period for extensive flooding > 50 years and ≤ 100 years
 - F4 - Return period for extensive flooding ≤ 50 years (possible to raise land but requires investigation)
 - F5 - Return Period for extensive flooding ≤ 50 years (suitable for landuse at current level which accepts or mitigates flood hazard. Raising land only where effects off-set elsewhere)
 - F6 - Return Period for extensive flooding ≤ 50 years (suitable for landuse at current level. Cannot raise without flooding Green Zone)

Map Purpose:
 Map is a component of the Remediation Feasibility map series produced to support the planning framework for the future use of the Residential Red Zone (FURZ).
 Please note - Map supplied 'In Confidence' according to State Services Commission guidelines for more information see: <http://www.gcsb.govt.nz/newsroom/reports-publications.html>



Publication Date:
 9/02/2015
Scale:
 1:8,000
 (Original sheet size A3)
Disclaimer
 This map is a static output of depicted layers and is for reference only. Data layers that appear on this map may or may not be accurate, current, or otherwise reliable.
Coordinate System:
 NZGD 2000 New Zealand Transverse Mercator
Map Document:
 6771 - FURZ Remediation Feasibility Flooding.mxd
 For re-prints and map production contact NorthSouth GIS:
 Servicedesk@nsgnz.co.nz

IN CONFIDENCE
Restricted to Technical Panel Members Only

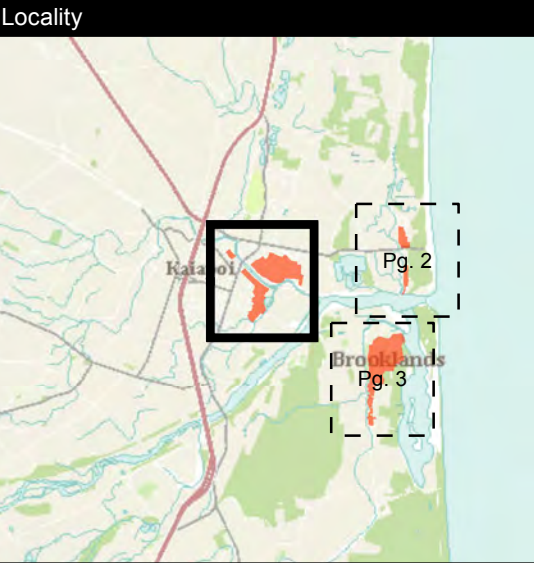


Legend
The categories shown in this Legend are explained more fully in the attached document titled "XXXXX" and which should be read in conjunction with this map.

- Residential Red Zone - Geotechnical Remediation Feasibility**
- G1 (Moderate-scale area-wide improvement works and/or deformation tolerant foundations. Minimum area 10,000m²)
 - G2 (Large-scale area wide improvement works and/or deformation tolerant foundations. Minimum ranges 10,000m² – 50,000m²)
 - G3 (Large-scale area wide improvement works only. Minimum ranges 10,000m² – 50,000m²)
 - G4 (Very large-scale area-wide improvement works. Minimum ranges 50,000m² – 100,000m²)
 - G5 (Large to very large-scale area-wide improvement works. Cost-effective only for high-value development.)
 - G6 (Large to very large-scale area-wide improvement works. Unlikely to be feasible or cost-effective.)

Map Purpose:
Map is a component of the technical theme map series produced to support the planning framework for the future use of the Residential Red Zone (FURZ).

Please note - Map supplied 'In Confidence' according to State Services Commission guidelines for more information see: <http://www.gcsb.govt.nz/newsroom/reports-publications.html>



Publication Date:
9/02/2015

Scale:
1:8,000
(Original sheet size A3)

Disclaimer
This map is a static output of depicted layers and is for reference only. Data layers that appear on this map may or may not be accurate, current, or otherwise reliable.

Coordinate System:
NZGD 2000 New Zealand Transverse Mercator

Map Document:
6771 - FURZ Remediation Feasibility Geotechnical.mxd

For re-prints and map production contact NorthSouth GIS:
Servicedesk@nsgnz.co.nz

IN CONFIDENCE
Restricted to Technical Panel Members Only

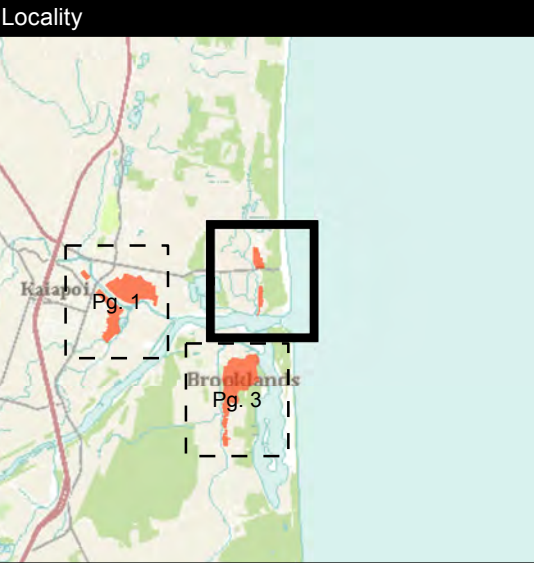


Legend
The categories shown in this Legend are explained more fully in the attached document titled “XXXXX” and which should be read in conjunction with this map.

- Residential Red Zone - Geotechnical Remediation Feasibility**
- G1 (Moderate-scale area-wide improvement works and/or deformation tolerant foundations. Minimum area 10,000m2)
 - G2 (Large-scale area wide improvement works and/or deformation tolerant foundations. Minimum ranges 10,000m2 – 50,000m2)
 - G3 (Large-scale area wide improvement works only. Minimum ranges 10,000m2 – 50,000m2)
 - G4 (Very large-scale area-wide improvement works. Minimum ranges 50,000m2 – 100,000m2)
 - G5 (Large to very large-scale area-wide improvement works. Cost-effective only for high-value development.)
 - G6 (Large to very large-scale area-wide improvement works. Unlikely to be feasible or cost-effective.)

Map Purpose:
Map is a component of the technical theme map series produced to support the planning framework for the future use of the Residential Red Zone (FURZ).

Please note - Map supplied 'In Confidence' according to State Services Commission guidelines for more information see: <http://www.gcsb.govt.nz/newsroom/reports-publications.html>



Publication Date:
9/02/2015

Scale:
1:8,000
(Original sheet size A3)

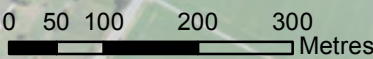
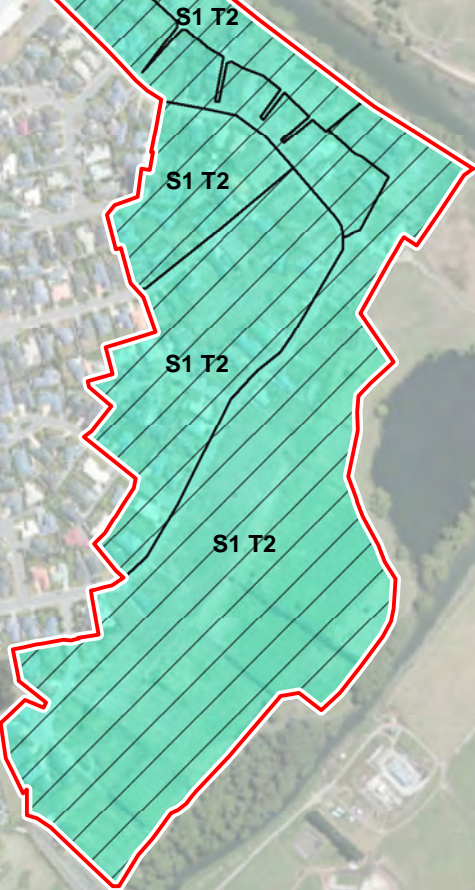
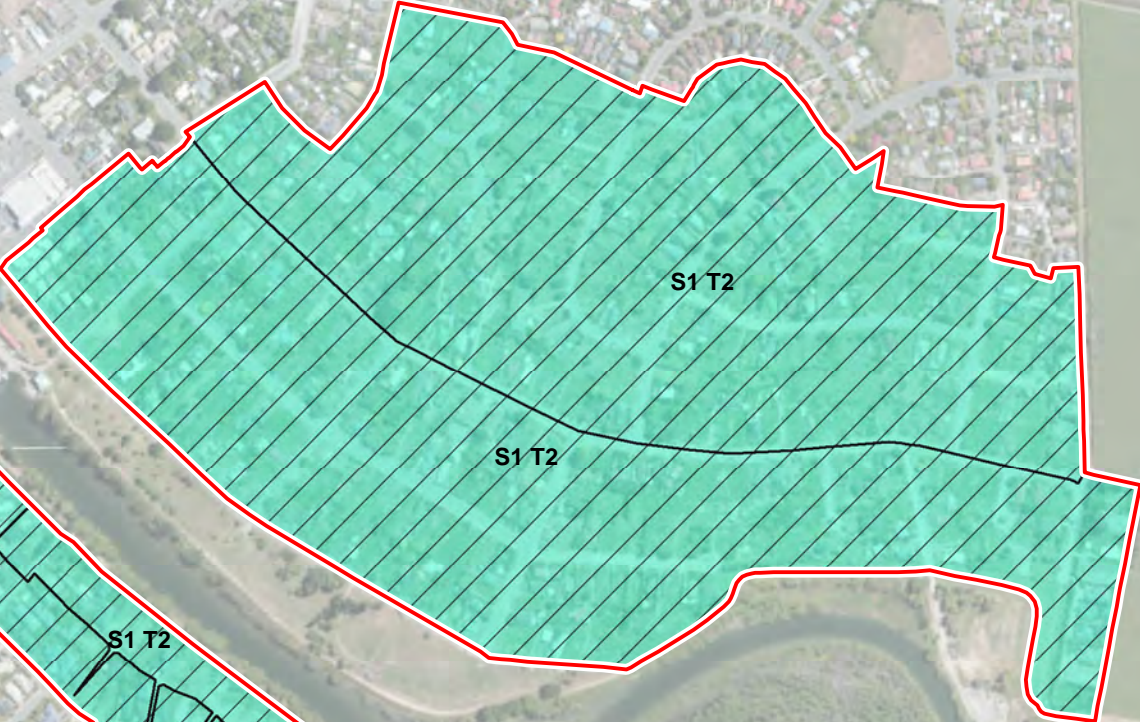
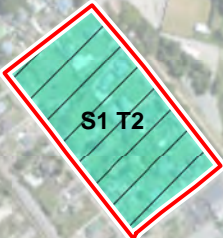
Disclaimer
This map is a static output of depicted layers and is for reference only. Data layers that appear on this map may or may not be accurate, current, or otherwise reliable.

Coordinate System:
NZGD 2000 New Zealand Transverse Mercator

Map Document:
6771 - FURZ Remediation Feasibility Geotechnical.mxd

For re-prints and map production contact NorthSouth GIS:
Servicedesk@nsgnz.co.nz

IN CONFIDENCE
Restricted to Technical Panel Members Only



Legend
The categories shown in this Legend are explained more fully in the attached document titled “XXXXX” and which should be read in conjunction with this map.

Residential Red Zone - Tsunami Remediation Feasibility

- T1 (Outside tsunami evacuation zone)
- T2 (Within tsunami evacuation zone)

Residential Red Zone - Sea Level Remediation Feasibility

- S1 (Outside area of 1.0m sea level rise)
- S2 (Within area impacted by 1% AEP inundation event)
- S3 (Area impacted by shoreline retreat due to passive inundation)

Map Purpose:

Map is a component of the Remediation Feasibility map series produced to support the planning framework for the future use of the Residential Red Zone (FURZ).

Please note - Map supplied 'In Confidence' according to State Services Commission guidelines for more information see: <http://www.gcsb.govt.nz/newsroom/reports-publications.html>

Locality



Publication Date:
9/02/2015

Scale:
1:8,000
(Original sheet size A3)

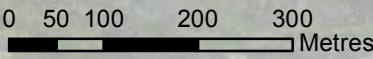
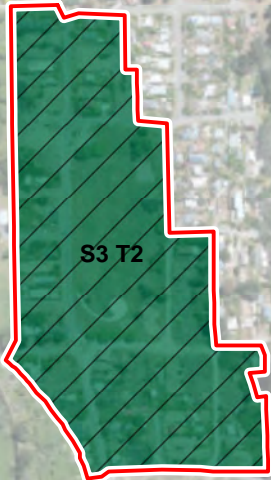
Disclaimer
This map is a static output of depicted layers and is for reference only. Data layers that appear on this map may or may not be accurate, current, or otherwise reliable.

Coordinate System:
NZGD 2000 New Zealand Transverse Mercator

Map Document:
6771 - FURZ Remediation Feasibility Tsunami and Sea Level.mxd

For re-prints and map production contact NorthSouth GIS:
Servicedesk@nsgnz.co.nz

IN CONFIDENCE
Restricted to Technical Panel Members Only



Legend
The categories shown in this Legend are explained more fully in the attached document titled “XXXXX” and which should be read in conjunction with this map.

Residential Red Zone - Tsunami Remediation Feasibility

- T1 (Outside tsunami evacuation zone)
- T2 (Within tsunami evacuation zone)

Residential Red Zone - Sea Level Remediation Feasibility

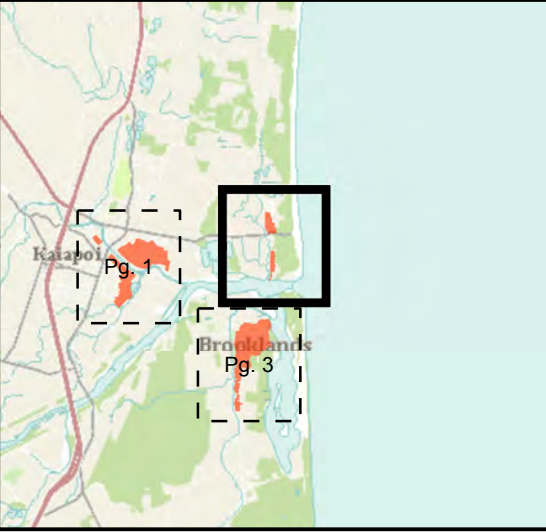
- S1 (Outside area of 1.0m sea level rise)
- S2 (Within area impacted by 1% AEP inundation event)
- S3 (Area impacted by shoreline retreat due to passive inundation)

Map Purpose:

Map is a component of the Remediation Feasibility map series produced to support the planning framework for the future use of the Residential Red Zone (FURZ).

Please note - Map supplied 'In Confidence' according to State Services Commission guidelines for more information see: <http://www.gcsb.govt.nz/newsroom/reports-publications.html>

Locality



Publication Date:
9/02/2015

Scale:
1:8,000
(Original sheet size A3)

Disclaimer
This map is a static output of depicted layers and is for reference only. Data layers that appear on this map may or may not be accurate, current, or otherwise reliable.

Coordinate System:
NZGD 2000 New Zealand Transverse Mercator

Map Document:
6771 - FURZ Remediation Feasibility Tsunami and Sea Level.mxd

For re-prints and map production contact NorthSouth GIS:
Servicedesk@nsgnz.co.nz